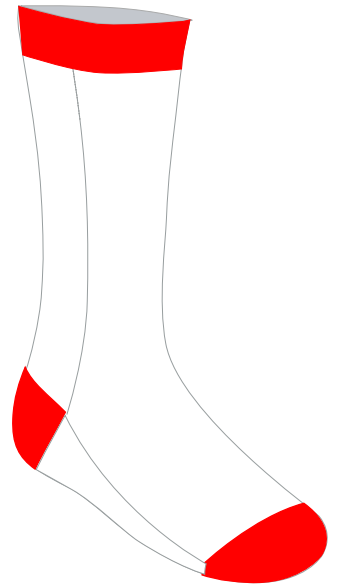
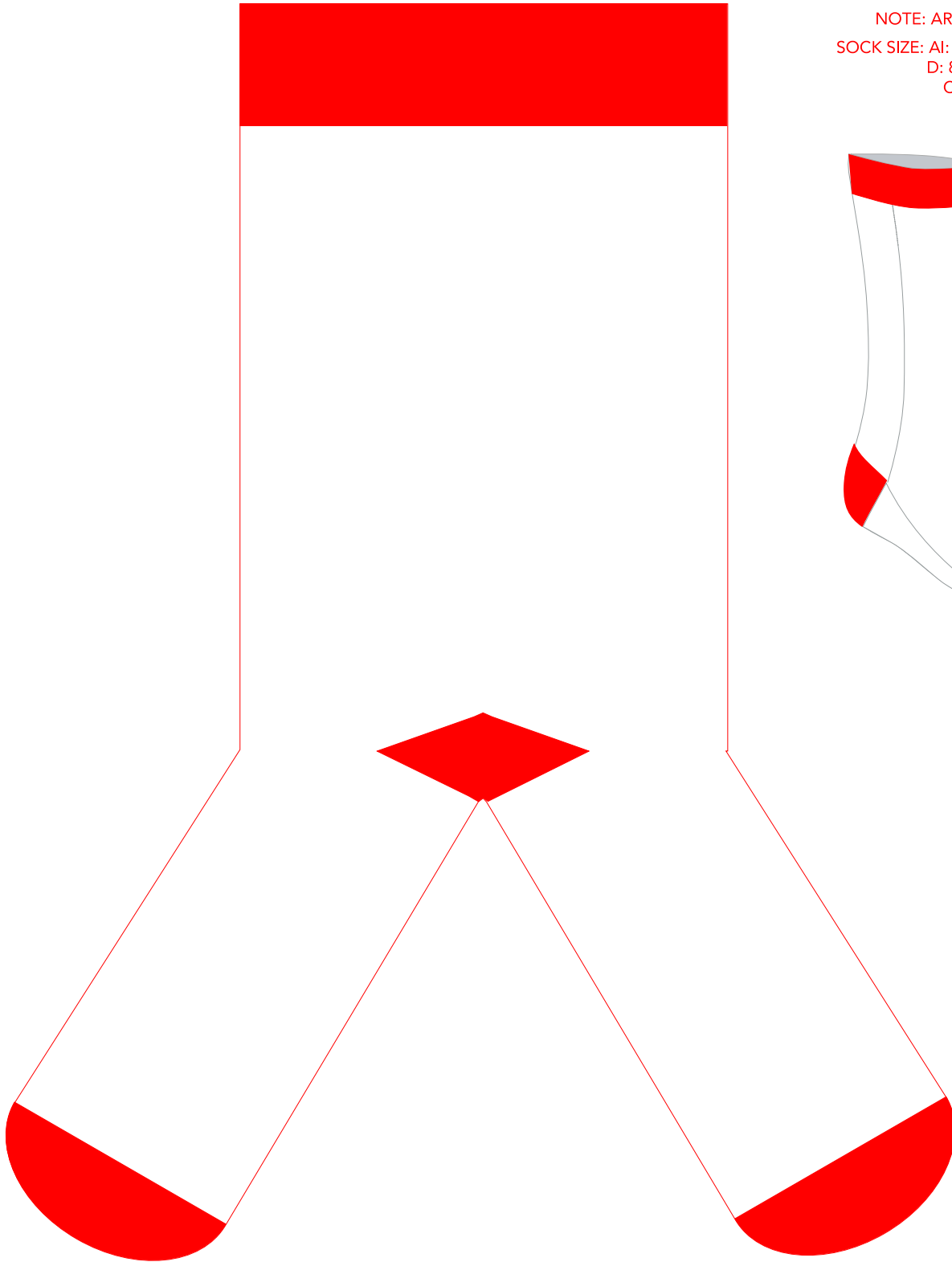


ATHLETIC SOCKS - NON-RIBBED

Artwork Layout

NOTE: ART SHOWN AT 50%
SOCK SIZE: AI: 24 cm, AFT: 20 cm,
D: 8.5 cm, DFR: 8.5 cm
CUFF SIZE: 4.0 cm H



ATHLETIC SOCKS - NON-RIBBED

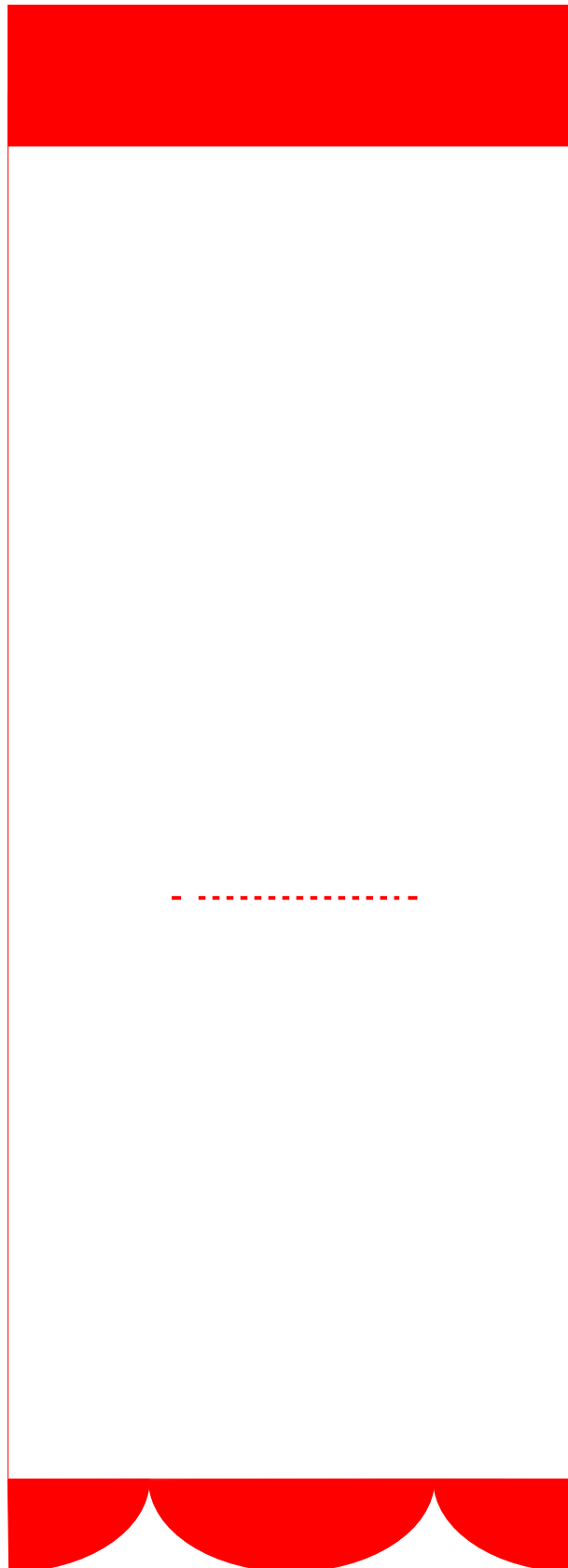
Flat Artwork Layout

NOTE: ART SHOWN AT 50%

SOCK SIZE: AI: 24 cm, AFT: 20 cm,

D: 8.5 cm, DFR: 8.5 cm

CUFF SIZE: 4.0 cm H



**Dotted line shows where the heel is placed in the design. Make sure all full art is above of below that line.

ATHLETIC SOCKS - NON-RIBBED

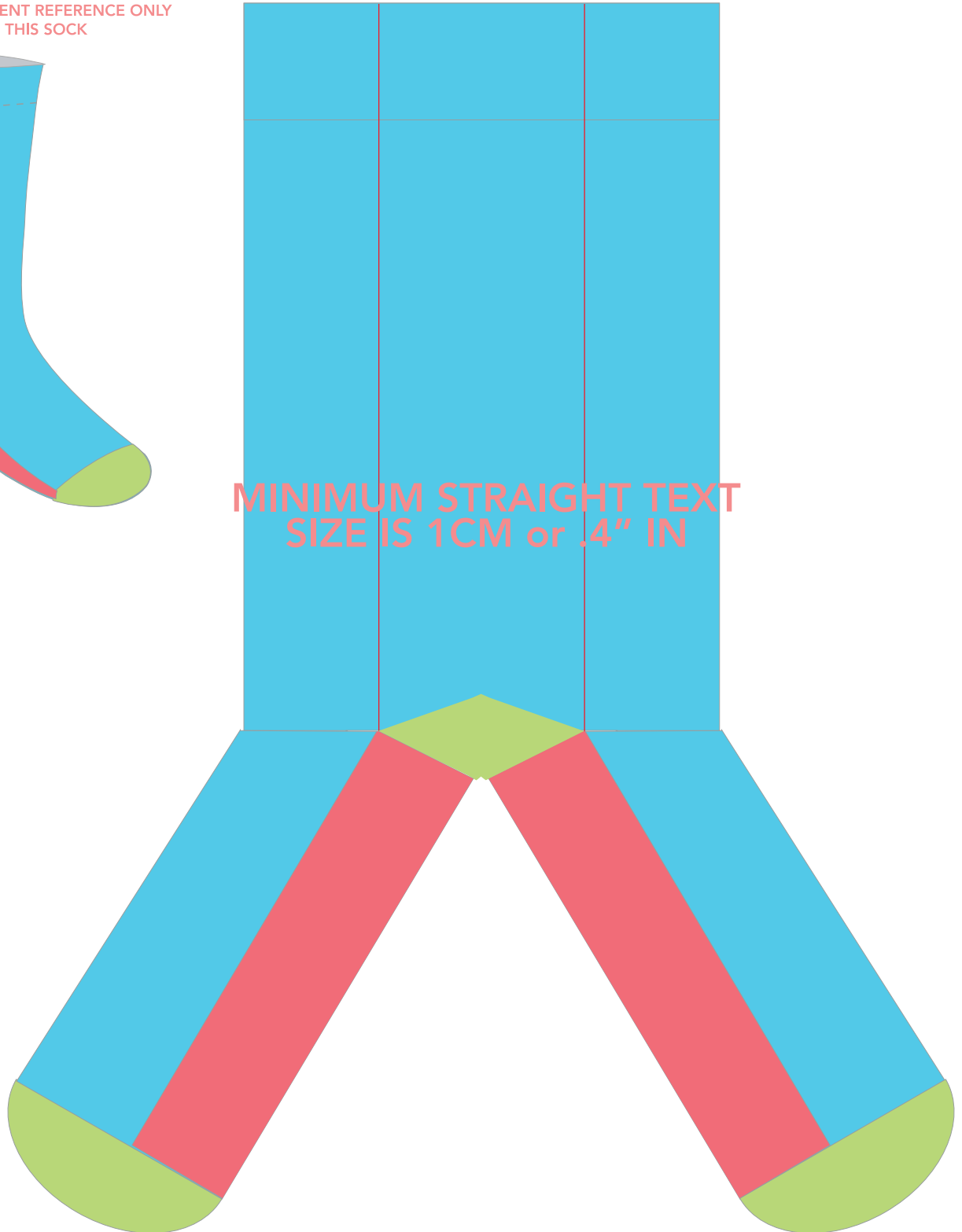
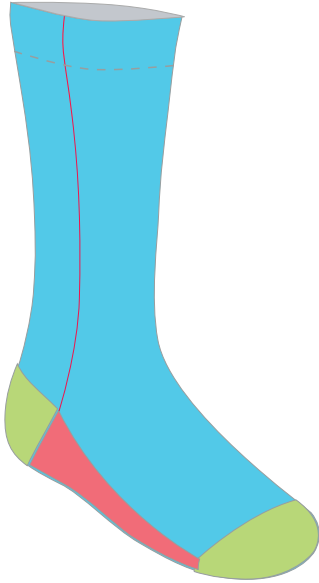
HOW TO USE

1. Use the reference sock to understand what each part of the template represents.
2. Please ensure your design is continuous around the entire sock. Keep in mind the sock is a tube.
3. Please limit your design to 6 total colors (3 PMS matched, 3 closest matches)
NOTE: Toe, heel and cuff colors are included in the 6 colors.
4. Use the guide in the reference sock and template to ensure your designs meet minimum text and line size.
 - All text that is straight must be at least .4" IN or 1 CM in height.
 - Diagonal text must be a minimum of .6" IN or 1.5 CM in height.
 - Lines must be at least .062" IN or .15 CM in width.
5. The toes and heel cannot be printed on.
6. The cuff can be printed, however, more spandex is used in the knitting process in the cuff which results in some distortion of any printing within it.

ATHLETIC SOCKS - NON-RIBBED

REFERENCE GUIDE

SOCK FOR TEMPLATE PLACEMENT REFERENCE ONLY
DO NOT DESIGN IN THIS SOCK

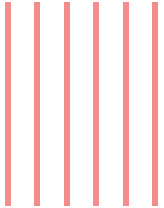


MINIMUM STRAIGHT TEXT
SIZE IS 1CM or .4" IN

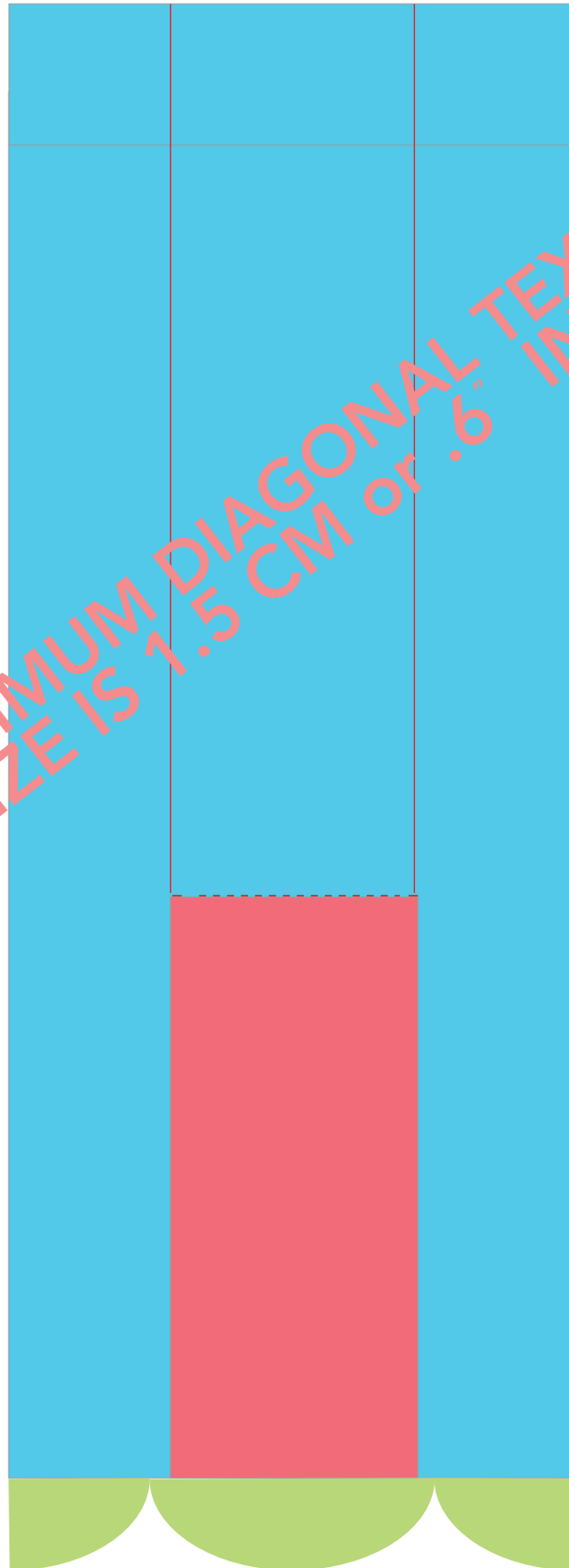
ATHLETIC SOCKS - NON-RIBBED

REFERENCE GUIDE

MINIMUM LINE SIZE IS .15 CM or .062" IN
USE THESE LINES AS GUIDES



MINIMUM DIAGONAL TEXT
SIZE IS 1.5 CM or .6" IN



WOVEN CUFF TAG

Artwork Layout

NOTE: ART SHOWN AT 100%

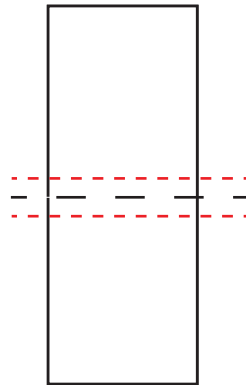
Tag Size: 0.77"W x 1.96"H

Folded at: 0.98"

NOTE: ALL COLORS ARE CLOSEST MATCH

Artwork must be above or below bleed line

— — — — — BLACK DOTTED LINE MARKS FOLD LINE
- - - - - RED DOTTED LINE MARKS BLEED LINE

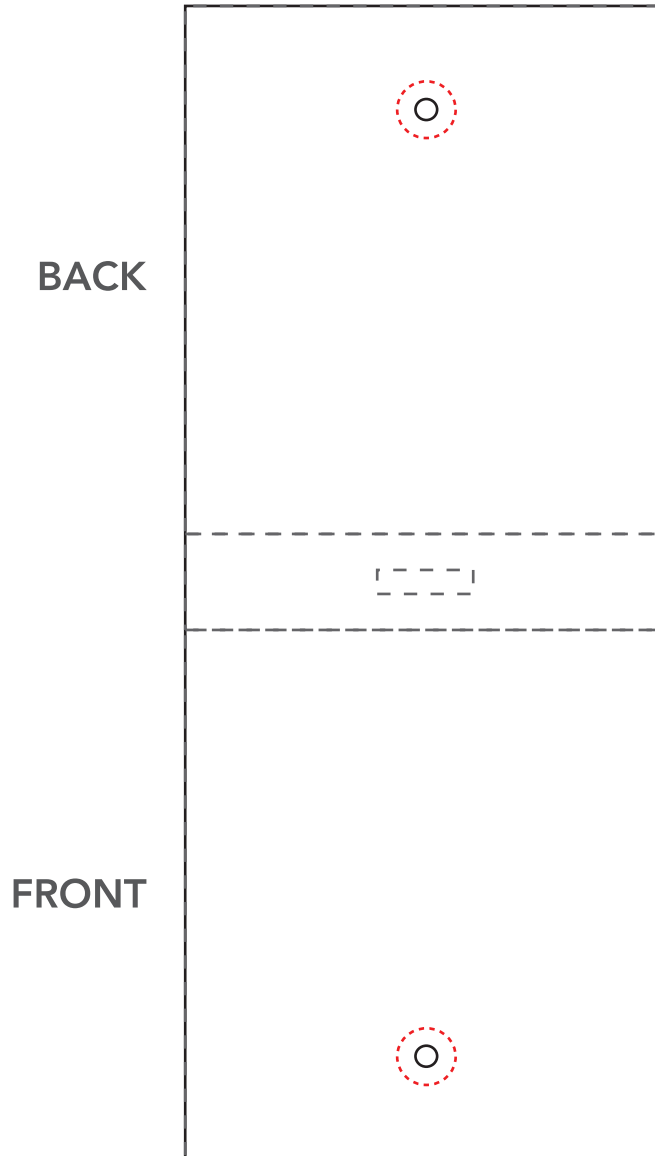


HANG TAG

Artwork Layout

NOTE: ART SHOWN AT 100%
Final Dimensions: 2.5" W X 6" H

----- Hole punch margin area
- - - - - Gray line marks Fold lines
300gsm weight

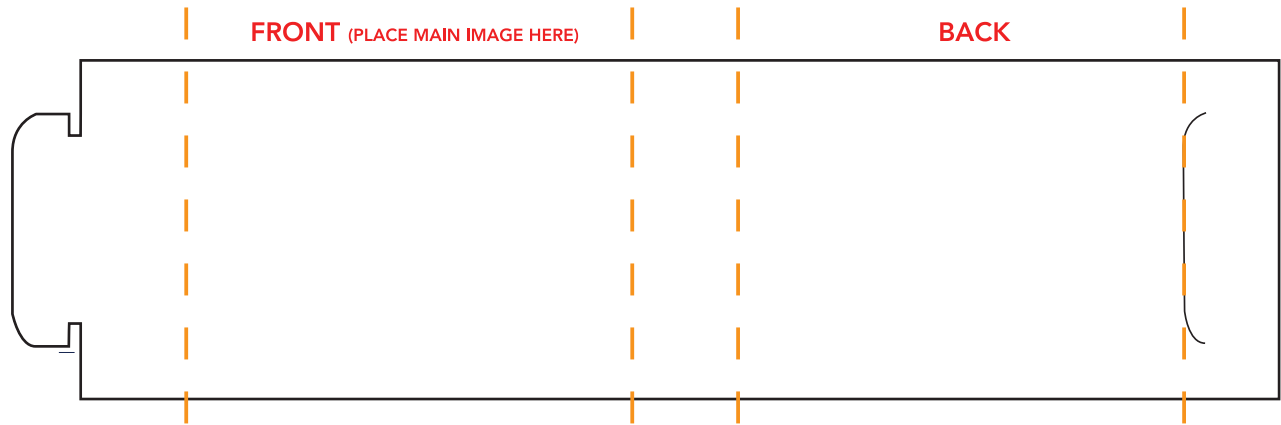


WRAP TAG

Artwork Layout

NOTE: ART SHOWN AT 70%

— — — BLACK DOTTED LINE MARKS FOLD LINE

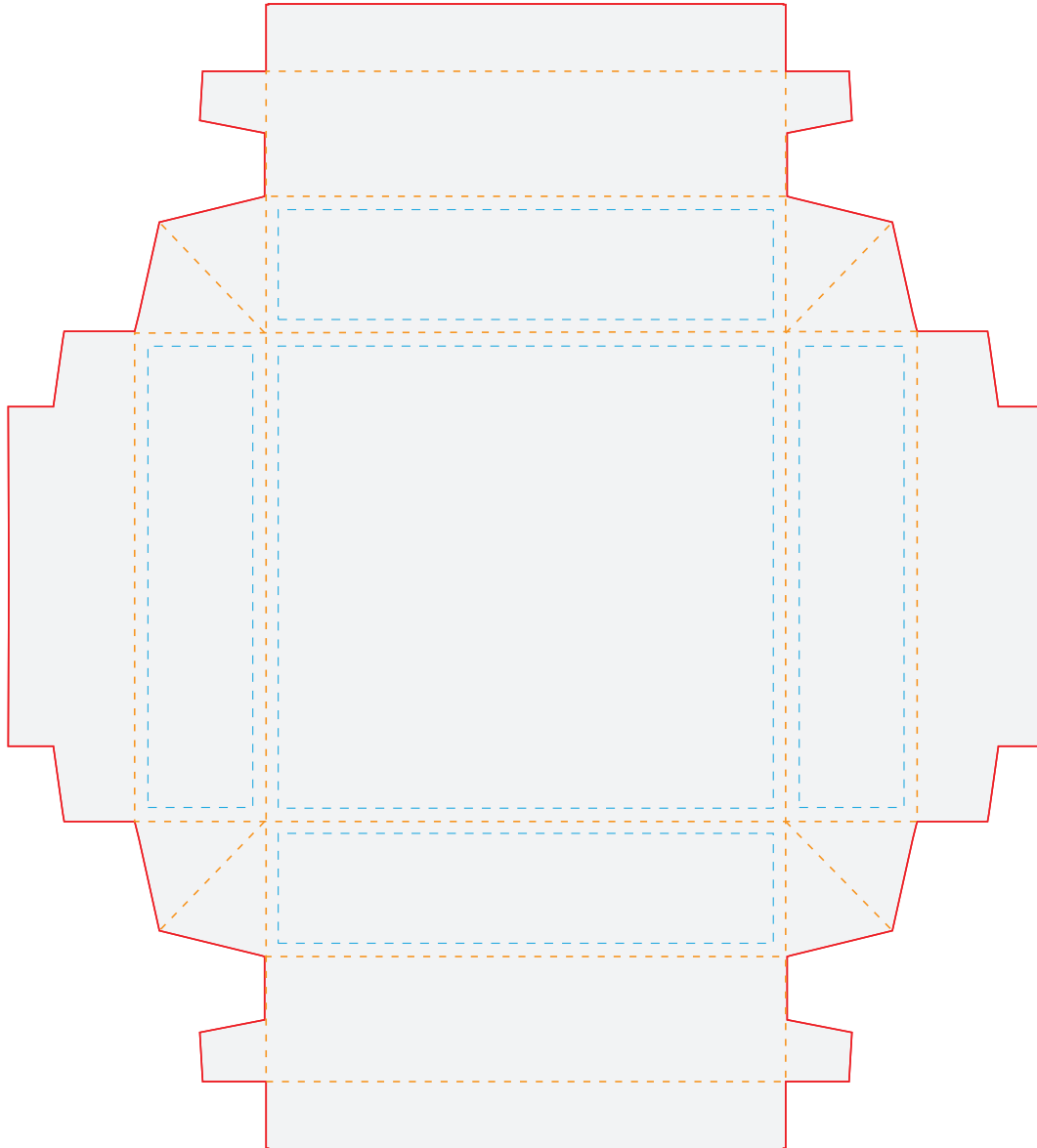


STANDARD SOCK BOX

TOP OF BOX : EXTERIOR PRINTING

Artwork Layout

NOTE: ART SHOWN A 60%
Blue dotted line marks artwork safe zone
All artwork must bleed to red line
Orange dotted line marks fold line
DO NOT PRINT GUIDELINES



DESIGN NOTES

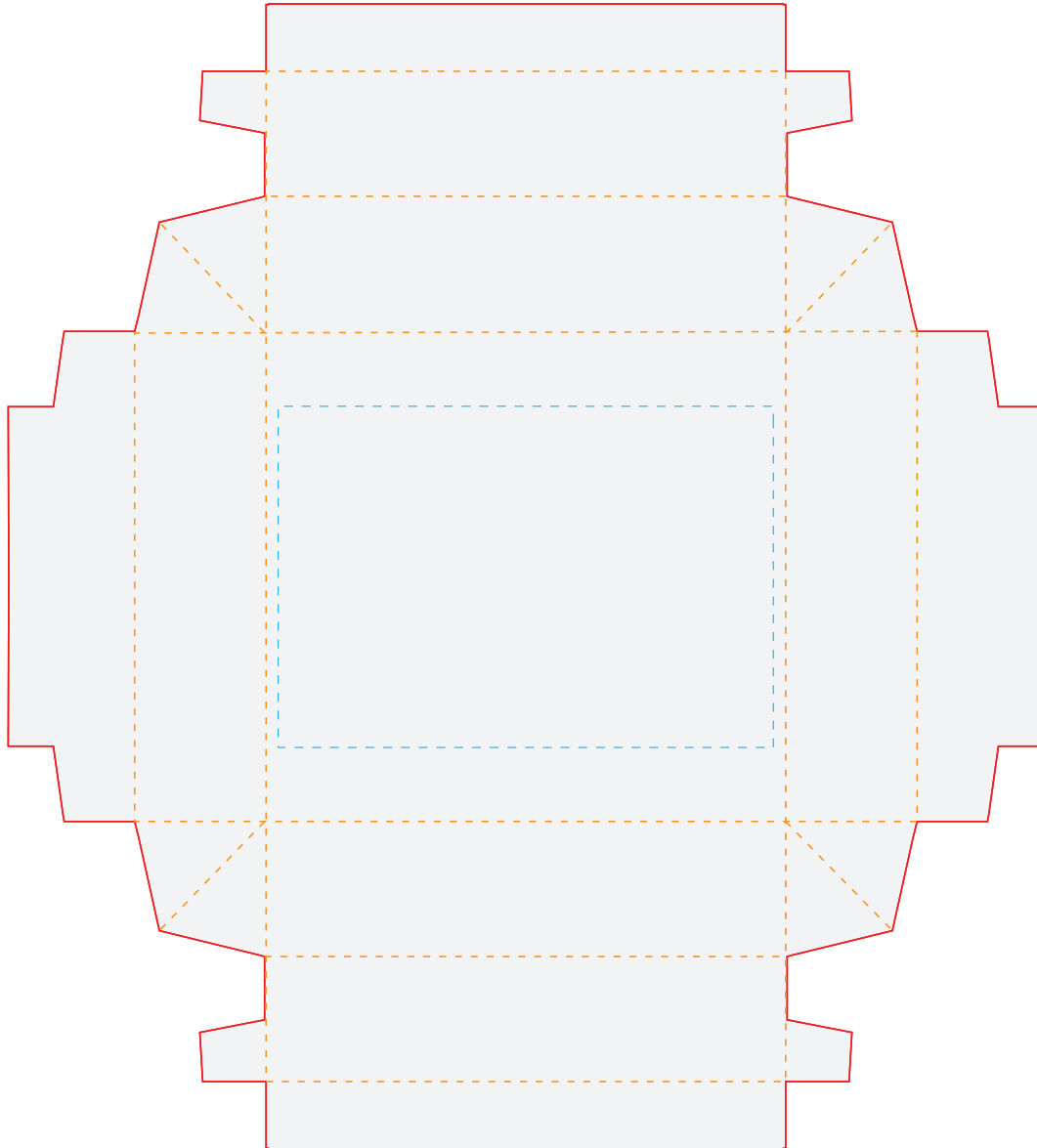
CMYK PRINTING - PMS COLORS ARE FOR REFERENCE ONLY

STANDARD SOCK BOX

TOP OF BOX : INTERIOR PRINTING

Artwork Layout

NOTE: ART SHOWN A 60%
Blue dotted line marks artwork safe zone
All artwork must bleed to red line
Orange dotted line marks fold line
DO NOT PRINT GUIDELINES



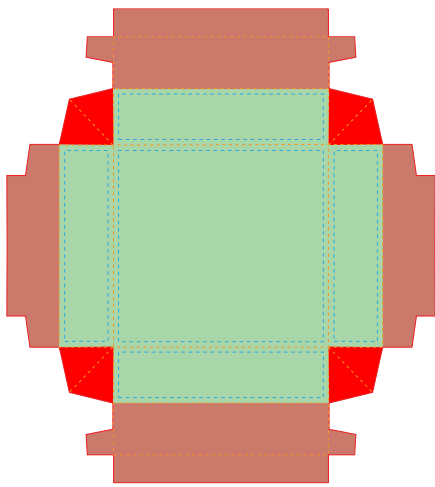
DESIGN NOTES




CMYK PRINTING - PMS COLORS ARE FOR REFERENCE ONLY

STANDARD SOCK BOX

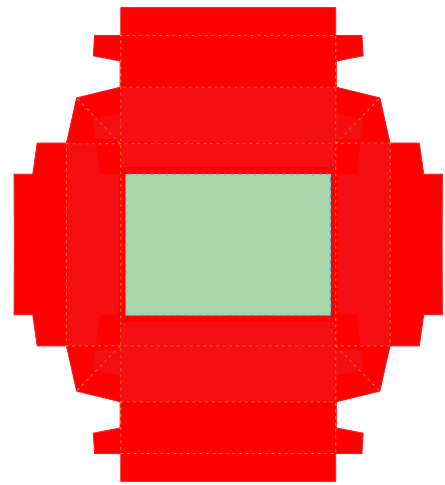
TOP OF BOX : ARTWORK REFERENCE




ARTWORK PLACEMENT REFERENCE



-  AREAS WILL BE VISIBLE ONCE ASSEMBLED
-  AREAS WILL BE HIDDEN ONCE ASSEMBLED
-  AREAS WILL BE FOLDED TO INTERIOR OF BOX

ARTWORK PLACEMENT REFERENCE



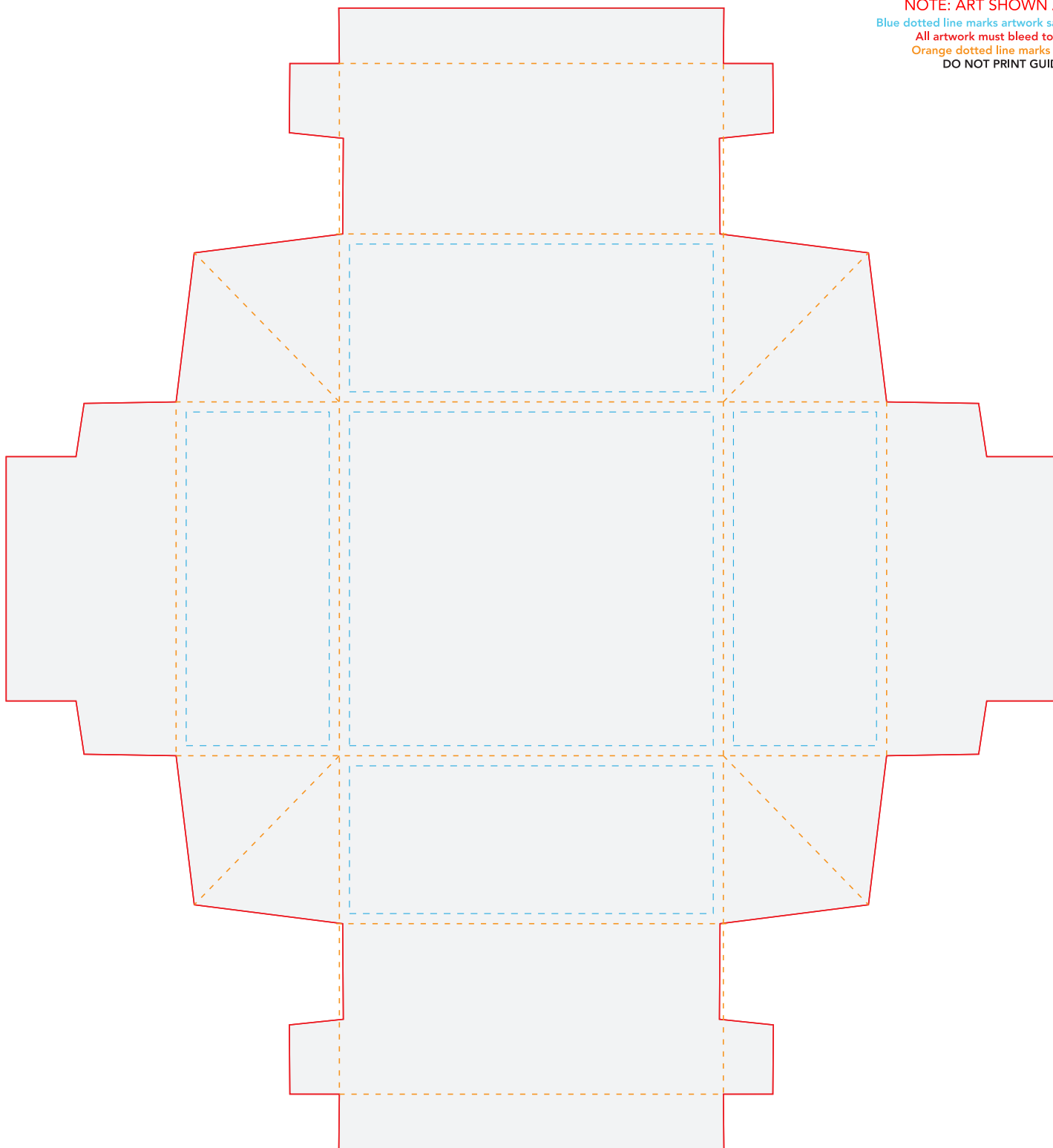
-  AREAS WILL BE VISIBLE ONCE ASSEMBLED
-  AREAS WILL BE HIDDEN ONCE ASSEMBLED
-  EXTERIOR PRINTING VISIBLE ON INTERIOR ONCE ASSEMBLED

STANDARD SOCK BOX

BOTTOM OF BOX : EXTERIOR PRINTING

Artwork Layout

NOTE: ART SHOWN A 60%
Blue dotted line marks artwork safe zone
All artwork must bleed to red line
Orange dotted line marks fold line
DO NOT PRINT GUIDELINES



DESIGN NOTES

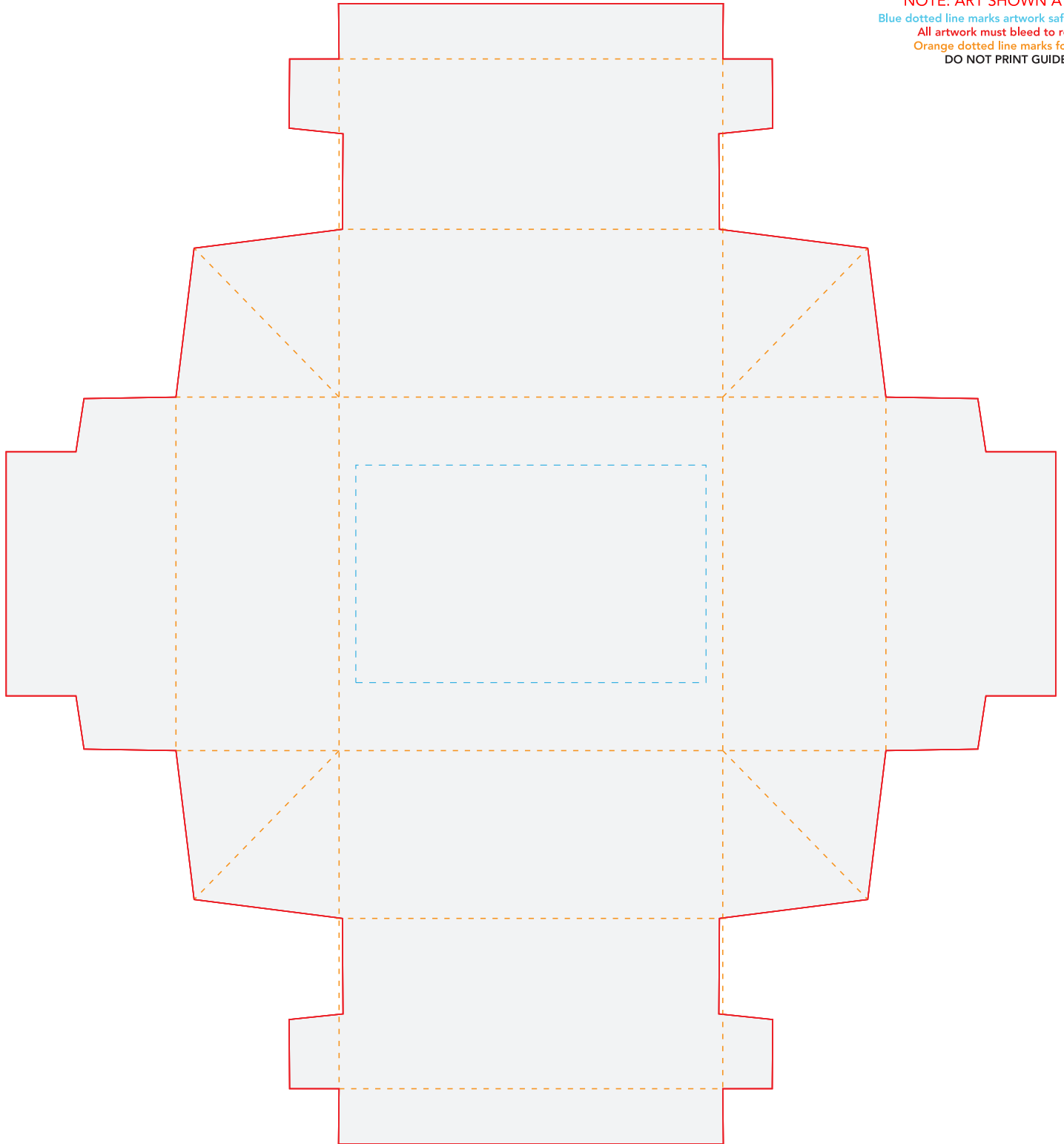
CMYK PRINTING - PMS COLORS ARE FOR REFERENCE ONLY

STANDARD SOCK BOX

BOTTOM OF BOX : INTERIOR PRINTING

Artwork Layout

NOTE: ART SHOWN A 60%
Blue dotted line marks artwork safe zone
All artwork must bleed to red line
Orange dotted line marks fold line
DO NOT PRINT GUIDELINES



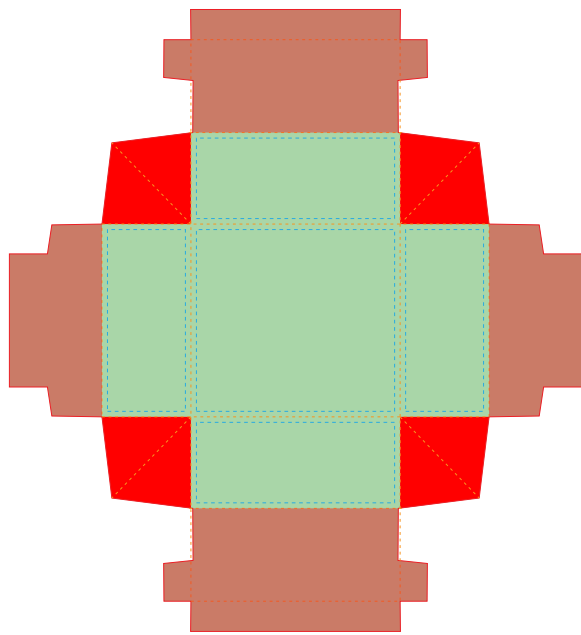
DESIGN NOTES




CMYK PRINTING - PMS COLORS ARE FOR REFERENCE ONLY

STANDARD SOCK BOX

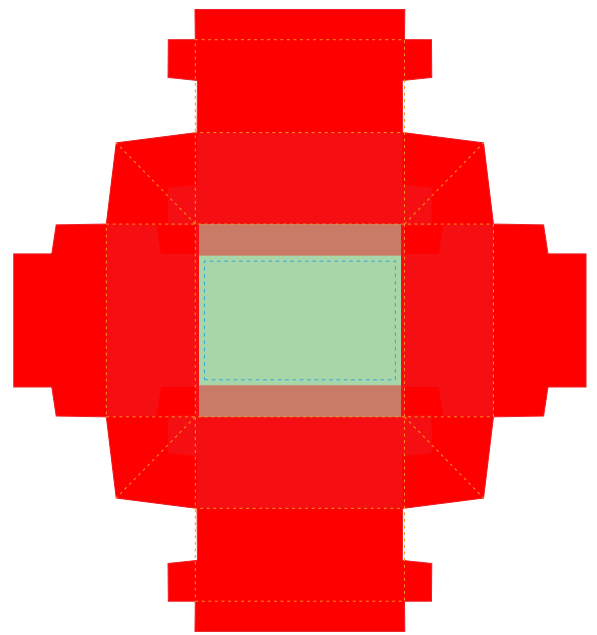
BOTTOM OF BOX : ARTWORK REFERENCE




ARTWORK PLACEMENT REFERENCE



-  AREAS WILL BE VISIBLE ONCE ASSEMBLED
-  AREAS WILL BE HIDDEN ONCE ASSEMBLED
-  AREAS WILL BE FOLDED TO INTERIOR OF BOX

ARTWORK PLACEMENT REFERENCE



-  AREAS WILL BE VISIBLE ONCE ASSEMBLED
-  AREAS WILL BE HIDDEN ONCE ASSEMBLED
-  EXTERIOR PRINTING VISIBLE ON INTERIOR ONCE ASSEMBLED