

KNIT GLOVES

Artwork Layout

NOTE: ART SHOWN AT 50%

Artwork must be within blue dotted lines

Black line marks product edge

Product Dimensions

Total Height (Includes cuff)

IN: 8.5" | CM: 21.59cm

Palm Width

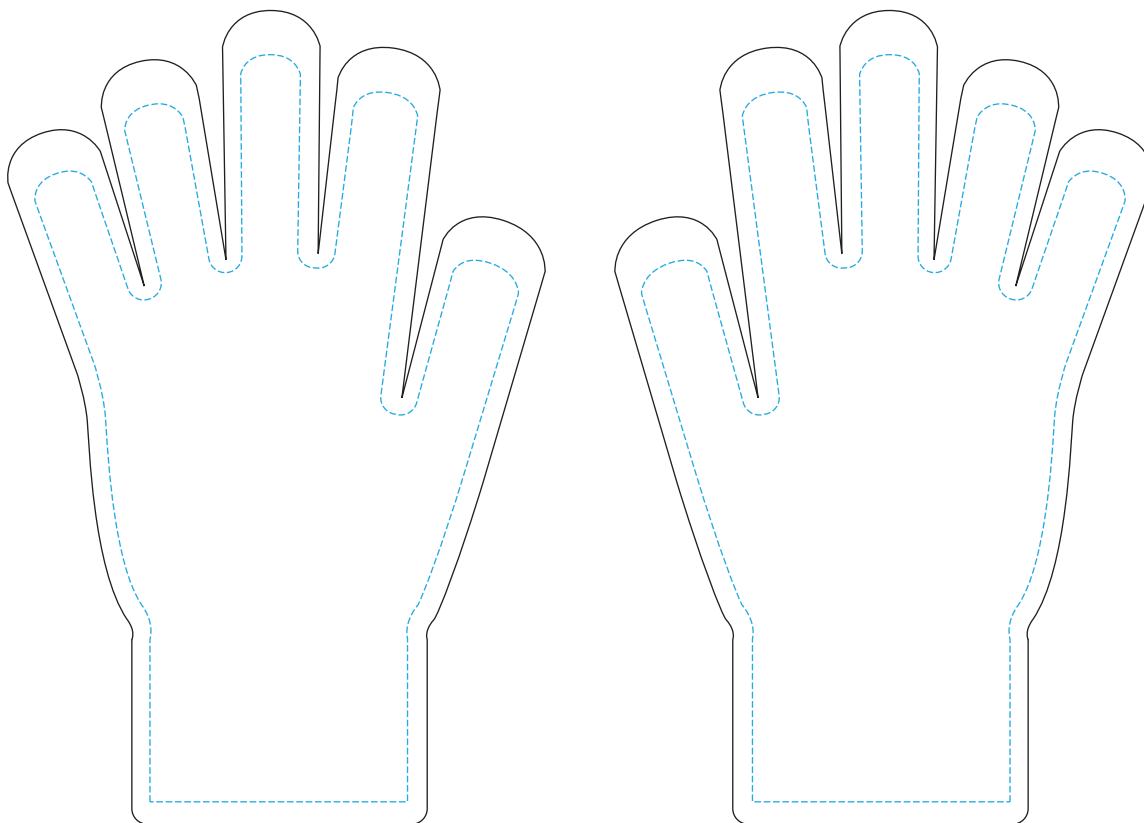
IN: 3.25" | CM: 8.25cm

Cuff Height

IN: 1.92" | CM: 4.87cm

Cuff Width

IN: 3.08" | CM: 7.82cm



BACK OF HANDS

DESIGN NOTES

BASE PRODUCT IS A SOLID COLOR GLOVE
ONE COLOR HORIZONTAL STRIPES CAN BE ADDED TO GLOVE

UP TO 4 COLORS CAN BE PRINTED ON GLOVE
ARTWORK MUST BE WITHIN BLUE DOTTED LINES

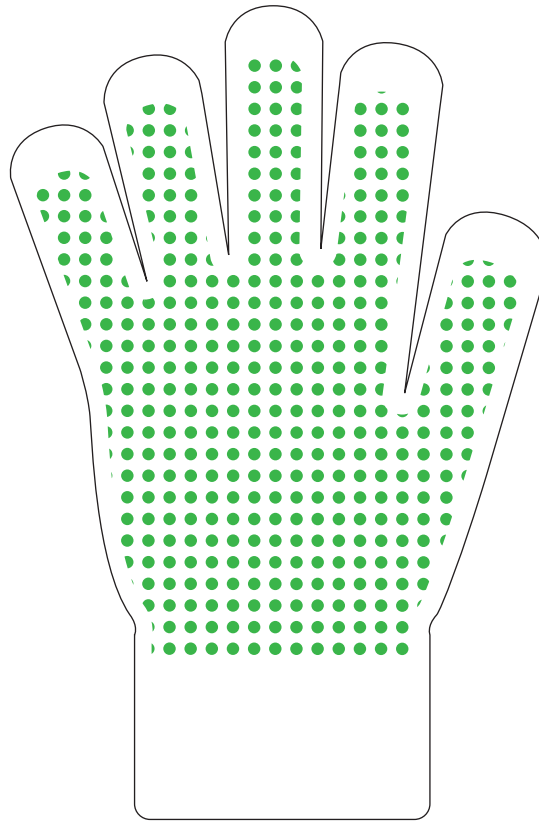
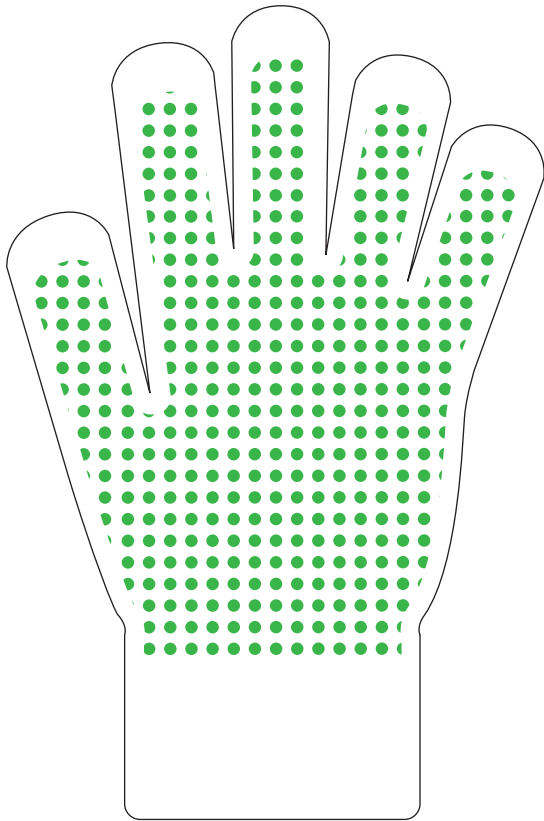
PLEASE NOTE: ALL ARTWORK NEEDS TO BE EVALUATED FOR MANUFACTURABILITY

KNIT GLOVES

ADD RUBBER GRIPPING ON PALMS

Artwork Layout

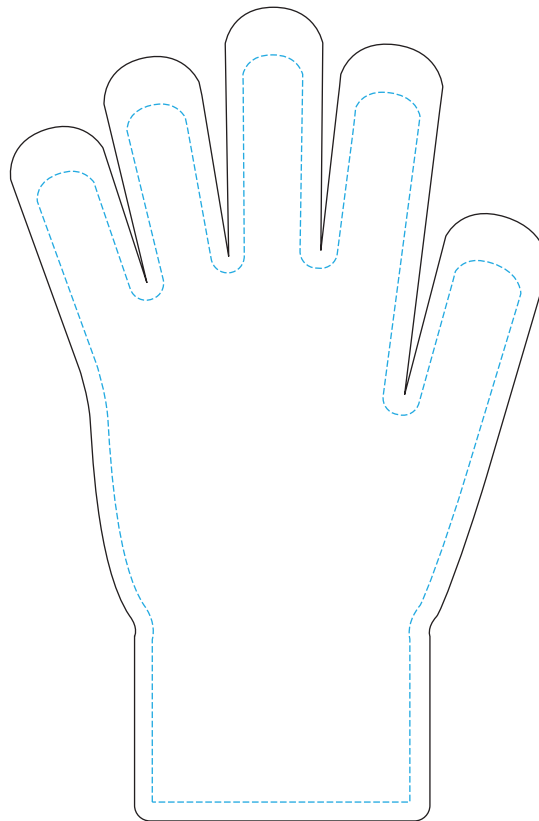
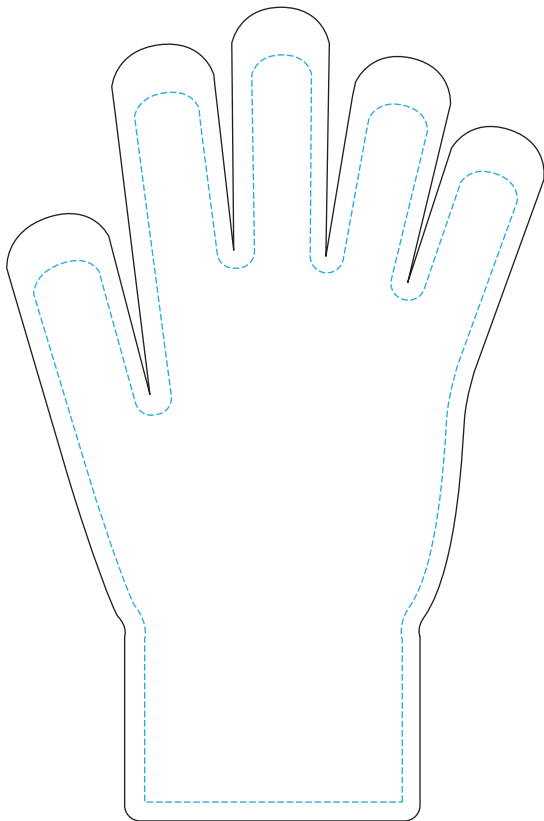
NOTE: ART SHOWN AT 50%



PALM OF HANDS

DESIGN NOTES

ONLY 1 COLOR CAN BE USED
IF USING STANDARD DOT PATTERN



PALM OF HANDS

DESIGN NOTES

UP TO 4 COLORS CAN BE USED
FOR CUSTOM RUBBER GRIPPING

ARTWORK MUST BE WITHIN
BLUE DOTTED LINES

KNIT GLOVES

ADD A WOVEN TAG

Artwork Layout

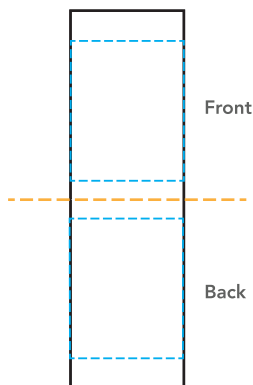
NOTE: ART SHOWN AT 100%

Blue dotted line marks artwork safe zone

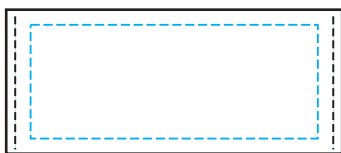
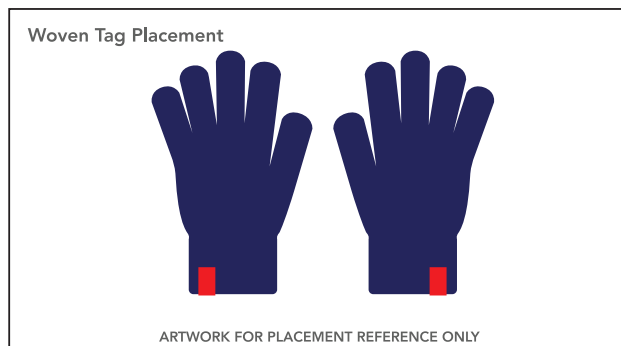
Orange dotted line marks fold line

Black line marks product edge

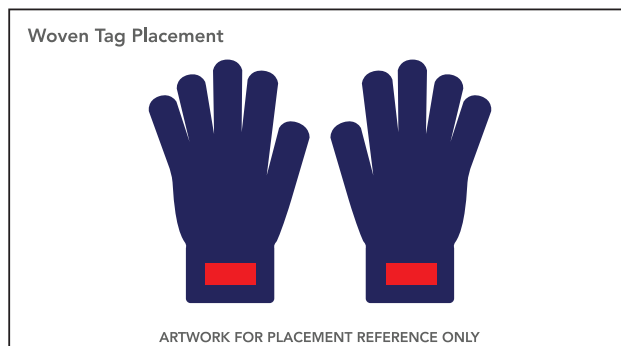
Black Dotted Line marks Stitch Line



Full Dimensions: .59" W X 1.97" H
Folded at: .985"



Final Dimensions: 1.75" W X .75" H



DESIGN NOTES

UP TO 7 COLORS CAN BE USED
ALL COLORS ARE CLOSEST MATCH TO PMS REFERENCE