

REVERSIBLE BUCKET HAT

Artwork Layout

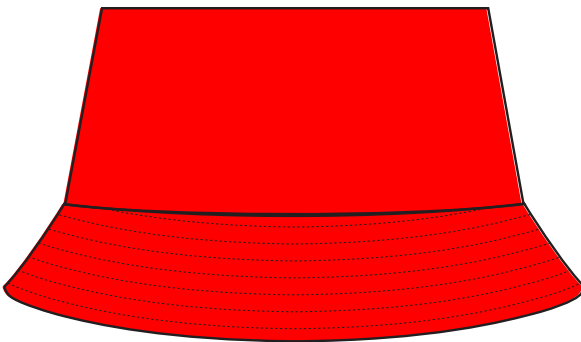
NOTE: ART SHOWN AT 30%

Hat Circumference: 24.6"

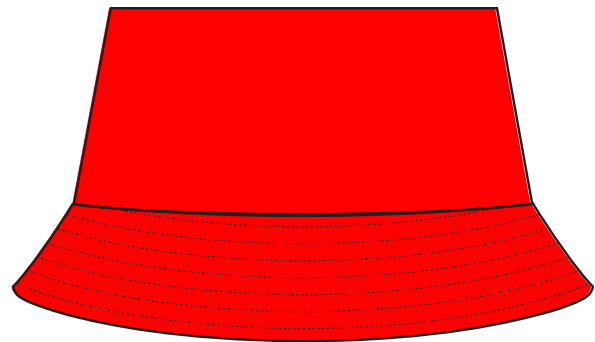
Brim Size: 2.25" H

Crown Size: 3.375" H

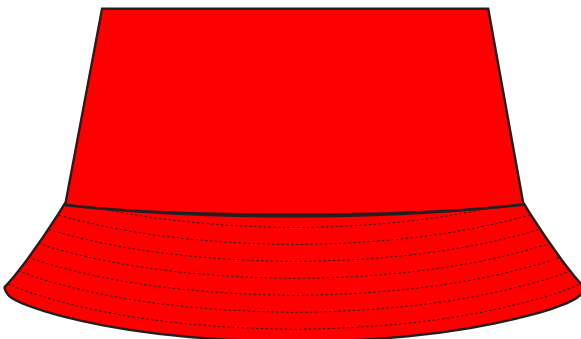
Black line marks product edge
Black Dotted Line marks Stitch Line



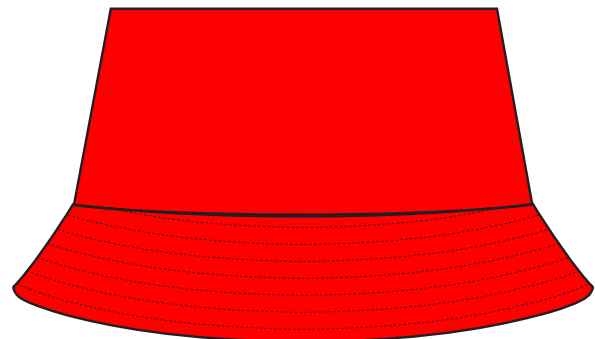
FRONT - EXTERIOR SIDE



FRONT - INTERIOR SIDE



BACK - EXTERIOR SIDE



BACK - INTERIOR SIDE

DESIGN INFORMATION

Due to material content and printing process, some inconsistencies in color may be observed.

Artwork may appear slightly skewed due to the nature of the fabric and sewing process.

Artwork is printed CMYK, up to 2 PMS colors can be called out for reference only.

Thread color will default to matching primary brim color. Artwork on brim will have stitching over it.

For best results, all lineweight should be at least 0.5mm.

REVERSIBLE BUCKET HAT

Artwork Layout

NOTE: ART SHOWN AT 30%

Hat Circumference: 24.6"

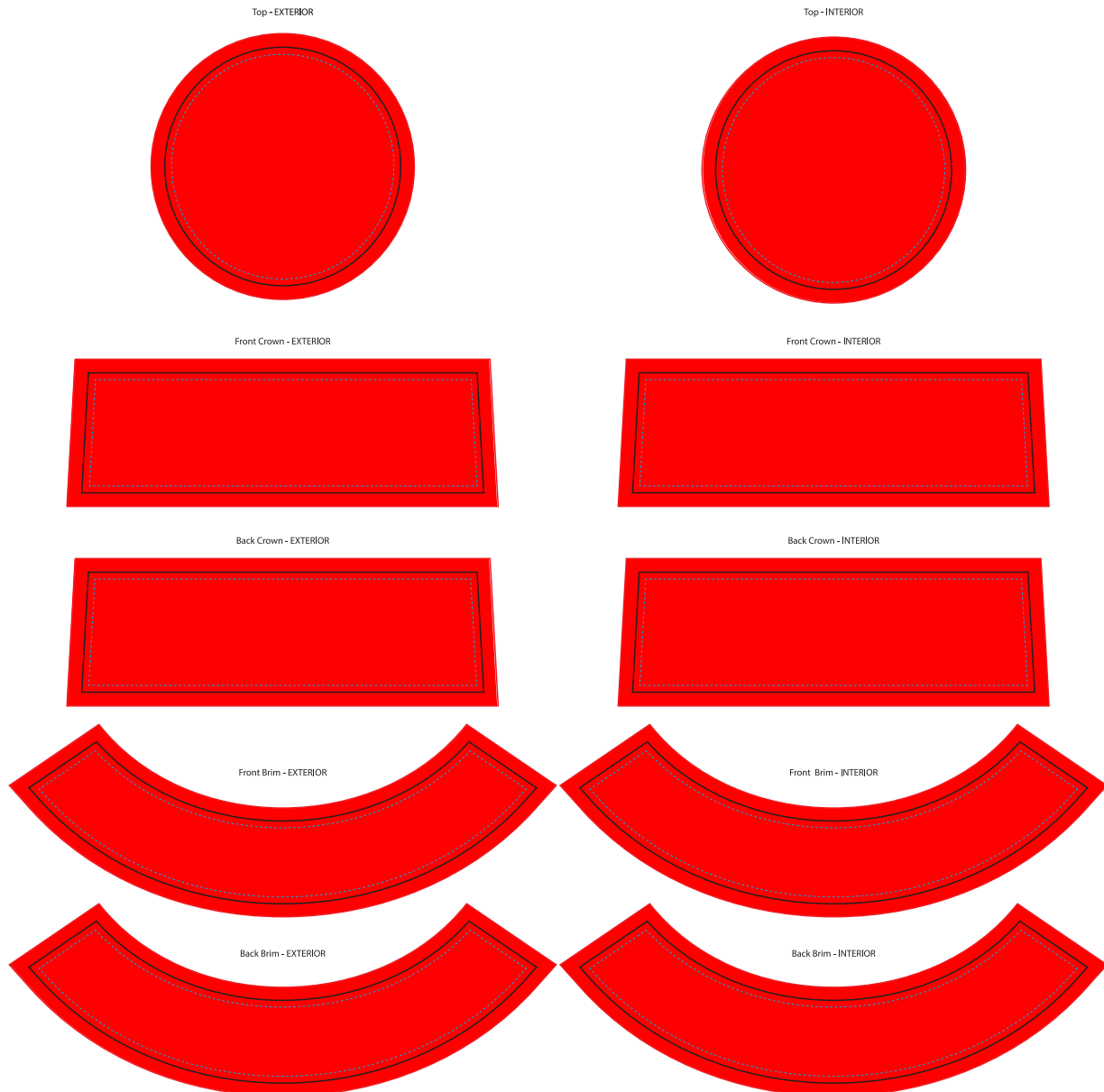
Brim Size: 2.25" H

Crown Size: 3.375" H

Blue dotted line marks artwork safe zone

All artwork must bleed to red line

Black line marks product edge



DESIGN INFORMATION

Due to material content and printing process, some inconsistencies in color may be observed.

Artwork may appear slightly skewed due to the nature of the fabric and sewing process.

Artwork is printed CMYK, up to 2 PMS colors can be called out for reference only.

Thread color will default to matching primary brim color. Artwork on brim will have stitching over it.

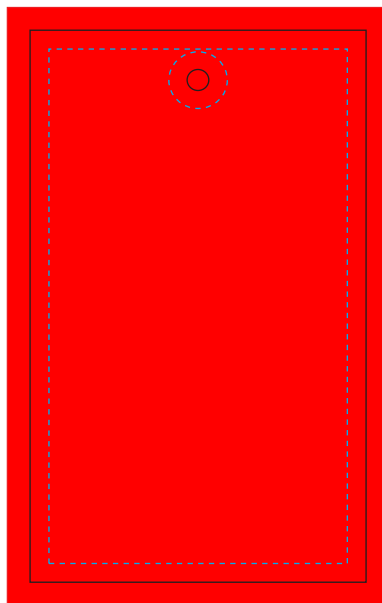
For best results, all lineweight should be at least 0.5mm.

REVERSIBLE HANG TAG

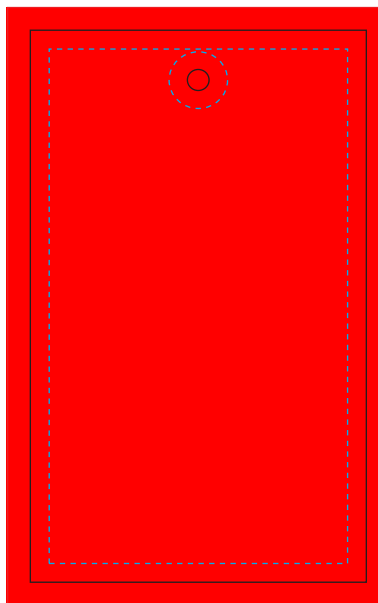
Artwork Layout

NOTE: ART SHOWN AT 100%
Finished Dimensions: 1.75"W x 2.875"H
Blue dotted line marks artwork safe zone
All artwork must bleed to red line
Black line marks product edge

FRONT



BACK



DESIGN INFORMATION

All artwork is printed using CMYK and PMS colors are for reference only.