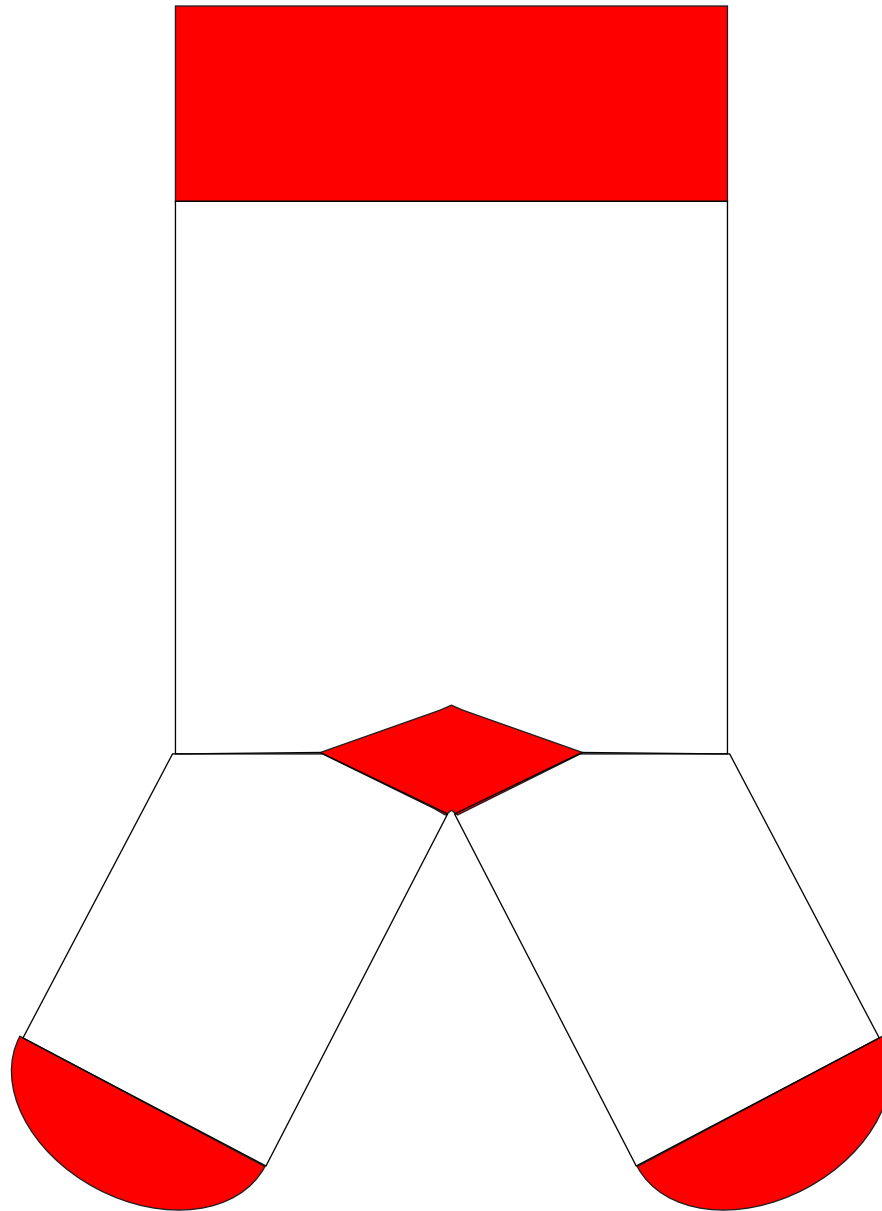


SAVER SOCKS - PETITE DRESS

Artwork Layout

NOTE: ART SHOWN AT 50%
SOCK SIZE: AI: 20 cm, AFT: 16 cm,
D: 8.5 cm, DFR: 8.5 cm
CUFF SIZE: 5 cm H



SAVER SOCKS - PETITE DRESS

Flat Artwork Layout

NOTE: ART SHOWN AT 50%

SOCK SIZE: AI: 20 cm, AFT: 16 cm,

D: 8.5 cm, DFR: 8.5 cm

CUFF SIZE: 5 cm H



**Dotted line shows where the heel is placed in the design. Make sure all full art is above of below that line.

SAVER SOCKS - PETITE DRESS

HOW TO USE

1. Use the reference sock to understand what each part of the template represents.
2. Please ensure your design is continuous around the entire sock. Keep in mind the sock is a tube.
3. **ONLY SAVER SOCK COLORS CAN BE USED FOR THESE SOCKS!**
Please use only the colors provided in the attached colors palette when choosing your sock colors.
4. Please limit your design to 6 total colors
NOTE: Toe, heel and cuff colors are included in the 6 colors.
5. Use the guide in the reference sock and template to ensure your designs meet minimum text and line size.
 - All text that is straight must be at least .4" IN or 1 CM in height.
 - Diagonal text must be a minimum of .6" IN or 1.5 CM in height.
 - Lines must be at least .062" IN or .15 CM in width.
6. The toes and heel cannot be printed on.
7. The cuff can be printed, however, more spandex is used in the knitting process in the cuff which results in some distortion of any printing within it.

SAVER SOCKS

COLOR CHOICES

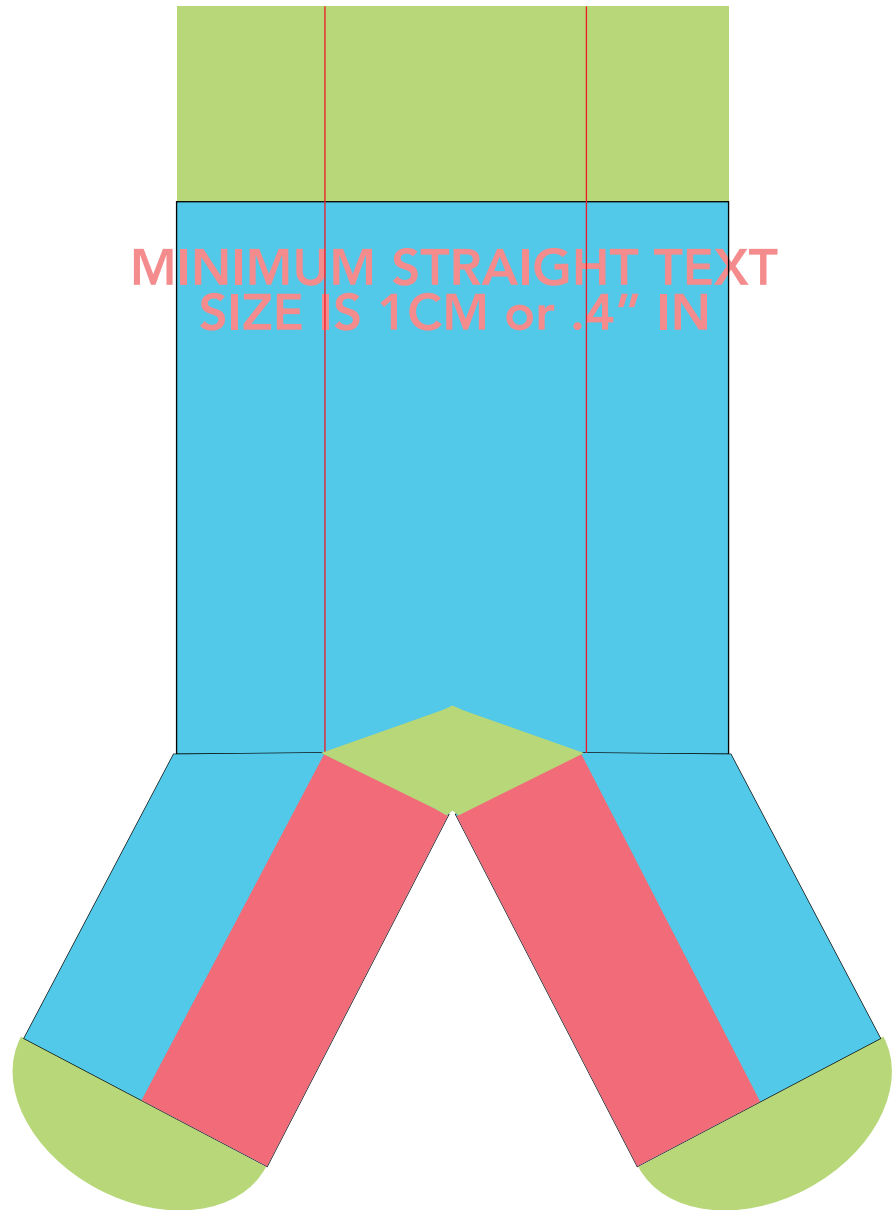
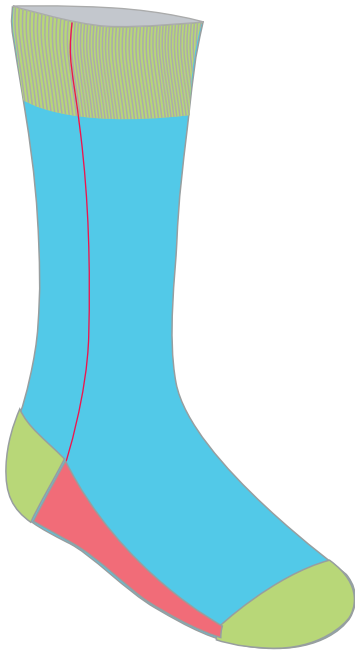
 Q389 (L58) PMS 2050 C Light Pink	 Q056 (L94) PMS 197 C Bubblegum	 Z060 (M144) PMS 7424 C Katie	 S066 (D22) PMS 227 C Raspberry	 S068 (D302) PMS 2048 C Rhubarb	 S107 (D330) PMS 512 C Barney	 S097 (D73) PMS 7641 C Crimson
 S076 (D57) PMS 1795 C Ketchup	 S094 (D125) PMS 7580 C Rust	 Z071 (M150) PMS 2029 C Alaskan Salmon	 S375 (D72*) PMS Bright Red C Florescent Orange	 S039 (D284) PMS 151 C Tangerine	 S080 (D303) PMS 201 C Holiday Red	 S077 (D136) PMS 200 C Warm Red
 Q012 (L89) PMS 7401 C Buttercup	 Q031 (L212) PMS 2015 C Peach	 Z025 (M160) PMS 137 C Marigold	 Z042 (M159) 145 C Pumpkin Pie	 S040 (D187*) PMS 165 C Cheeto	 Z024 (M60) PMS 116 C Sunflower	 Z020 (M67) PMS 101 C Yellow
 Z019 (M90) PMS 601 C Lemon Tarte	 Q172 (L219) PMS 7486 C Pistachio Gelato	 Z466 (D28*) PMS 7488 C Slime	 S178 (D270) PMS 2272 C Fresh Grass	 Z187 (M267) PMS 2303 C Chartreuse	 Z189 (M268) PMS 116 C Moss	 S179 (D27) PMS 348 C Shannon
 Q198 (L88) PMS 2413 C Bermuda	 Z199 (M83) PMS 326 C Amalfi	 Z166 (M318) PMS 7696 C Avize	 S455 (D267) PMS 2230 C Teal	 S192 (D137) PMS 3425 C Keltic	 S210 (D24) PMS 2411 C Deep Forest	 Z357 (M43*) PMS 297 C Prince George
 Q161 (L81) PMS 324 C Belize	 Z165 (M311) PMS 3105 C Turquoise	 Q156 (317) PMS 545 C Cloud Blue	 Q131 (L76) PMS 283 C Periwinkle	 S479 (M315*) PMS 2382 C Atlantic	 S139 (D233) PMS 2583 C Erin	 Z167 (M110) PMS 311 C Pulitzer Blue
 S153 (M274) PMS 2203 C Cerulean	 S145 (D77) PMS 2718 C Hydrangea	 Q114 (L85) PMS 271 C Lavendar	 Q113 (L84) PMS 2635 C Lilac	 Z115 (M153) PMS 7676 C Iris	 S119 (D260) PMS 2583 C Grape Juice	 Z356 (M230*) PMS 2123 C Orchid
 S149 (D170) PMS 2748 C Royal Blue	 S150 (D52) PMS 3581 C Crew	 S359 (D322) PMS 3597 C Sterling	 S140 (D320) PMS 540 C Ink	 S122 (D156) PMS 2112 C Deep Purple	 S116 (D210) PMS 2104 C Provence	 Q008 (L97) PMS 2309 C Cream
 Q221 (L197) PMS 4685 C Sand	 Q217 (L30) PMS 466 C Straw	 Q233 (L252) PMS 2312 C Cafe Au Lait	 S238 (D292) PMS 477 C Cinnamon	 S248 (D280) PMS 7589 C Milk Chocolate	 S111 (D258) PMS 7428 C Merlot	 S252 (D295) PMS 7517 C Coffee
 S501 (D51) PMS 296 C Suit Jacket	 Z311 (M45) PMS 2156 C Blue Gravel	 S443 (D343) PMS Cool Gray 11 C Elephant	 S435 (D155) PMS Cool Gray 10 C Taupe	 Q288 (L236) PMS 4276 C Tin	 Q268 (L86) PMS Cool Gray 3 C Frost	 Z312 (M39) PMS 5405 C Slate
 Black	 B003 Crisp White					

*Please reference the following PMS colors using a current Pantone book for color matching against our stock Saver colors. Because of the difference in printing processes from paper to yarn, these charts will not match the final colors exactly. If you have questions or concerns about color matching, please consult with your Sales Rep or request a pre-production sample with your order.

SAVER SOCKS - PETITE DRESS

REFERENCE GUIDE

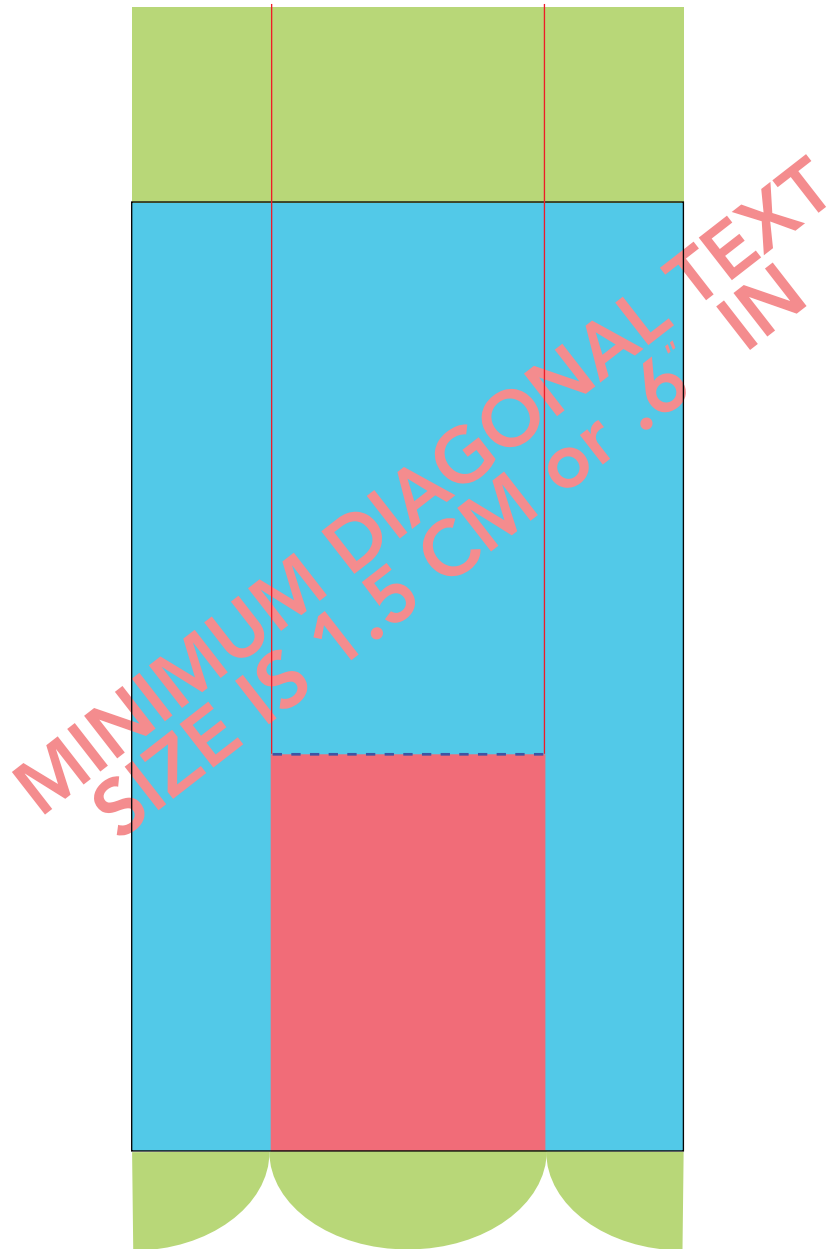
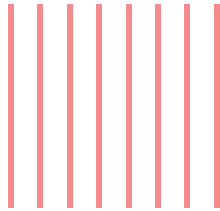
SOCK FOR TEMPLATE PLACEMENT REFERENCE ONLY
DO NOT DESIGN IN THIS SOCK



SAVER SOCKS - PETITE DRESS

REFERENCE GUIDE

MINIMUM LINE SIZE IS .15 CM or .062" IN
USE THESE LINES AS GUIDES



HANG TAG

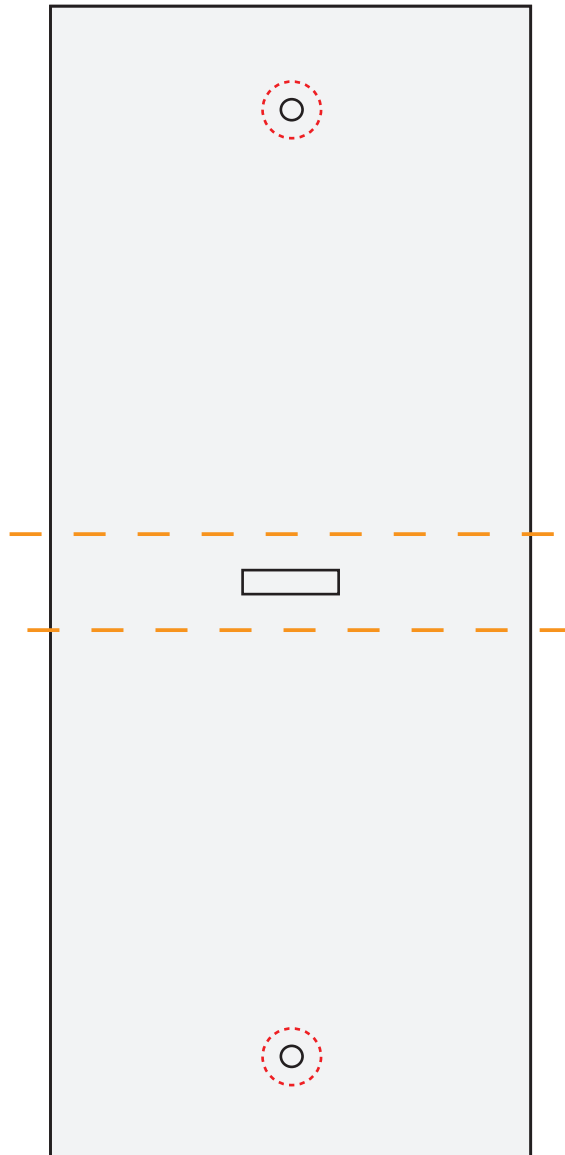
Artwork Layout

NOTE: ART SHOWN AT 100%
Final Dimensions: 2.5" W X 6.0" H

Orange Dotted Line Marks Fold Line
Black line marks product edge
Red dotted line marks hole variance
DO NOT PRINT GUIDELINES

BACK

FRONT



DESIGN NOTES

CMYK PRINTING - PMS COLORS ARE FOR REFERENCE ONLY

WRAP TAG

Artwork Layout

NOTE: ART SHOWN A 70%
Final Flat Dimensions: 8.3" W X 2.5" H

Orange Dotted Line Marks Fold Line
Black line marks product edge
DO NOT PRINT GUIDELINES



DESIGN NOTES

CMYK PRINTING - PMS COLORS ARE FOR REFERENCE ONLY

SLIM SOCK BOX

TOP OF BOX : EXTERIOR PRINTING

Artwork Layout

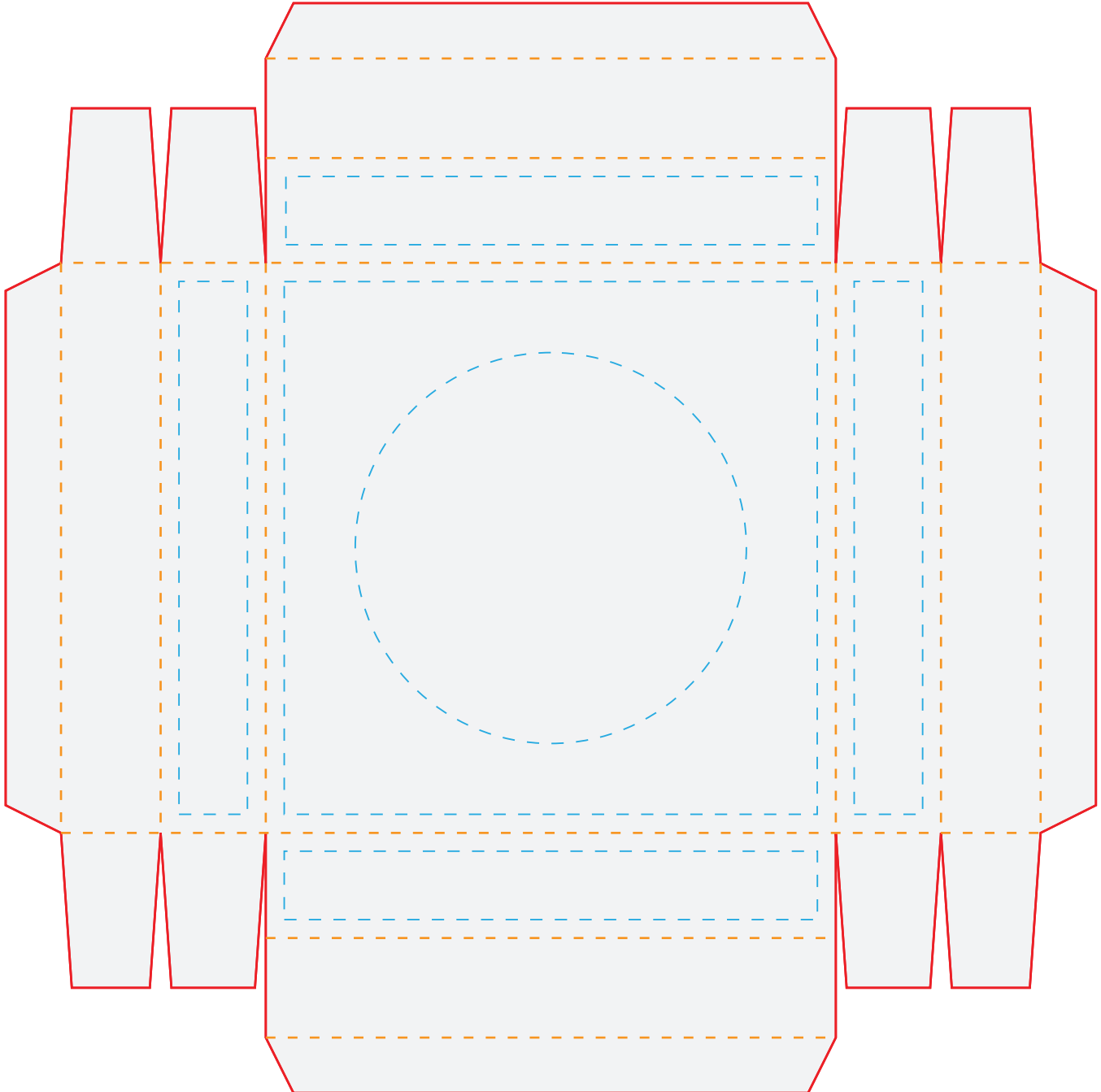
NOTE: ART SHOWN AT 100%

Blue dotted line marks artwork safe zone

All artwork must bleed to red line

Orange dotted line marks fold line

DO NOT PRINT GUIDELINES



DESIGN NOTES

CMYK PRINTING - PMS COLORS ARE FOR REFERENCE ONLY

SLIM SOCK BOX

TOP OF BOX : INTERIOR PRINTING

Artwork Layout

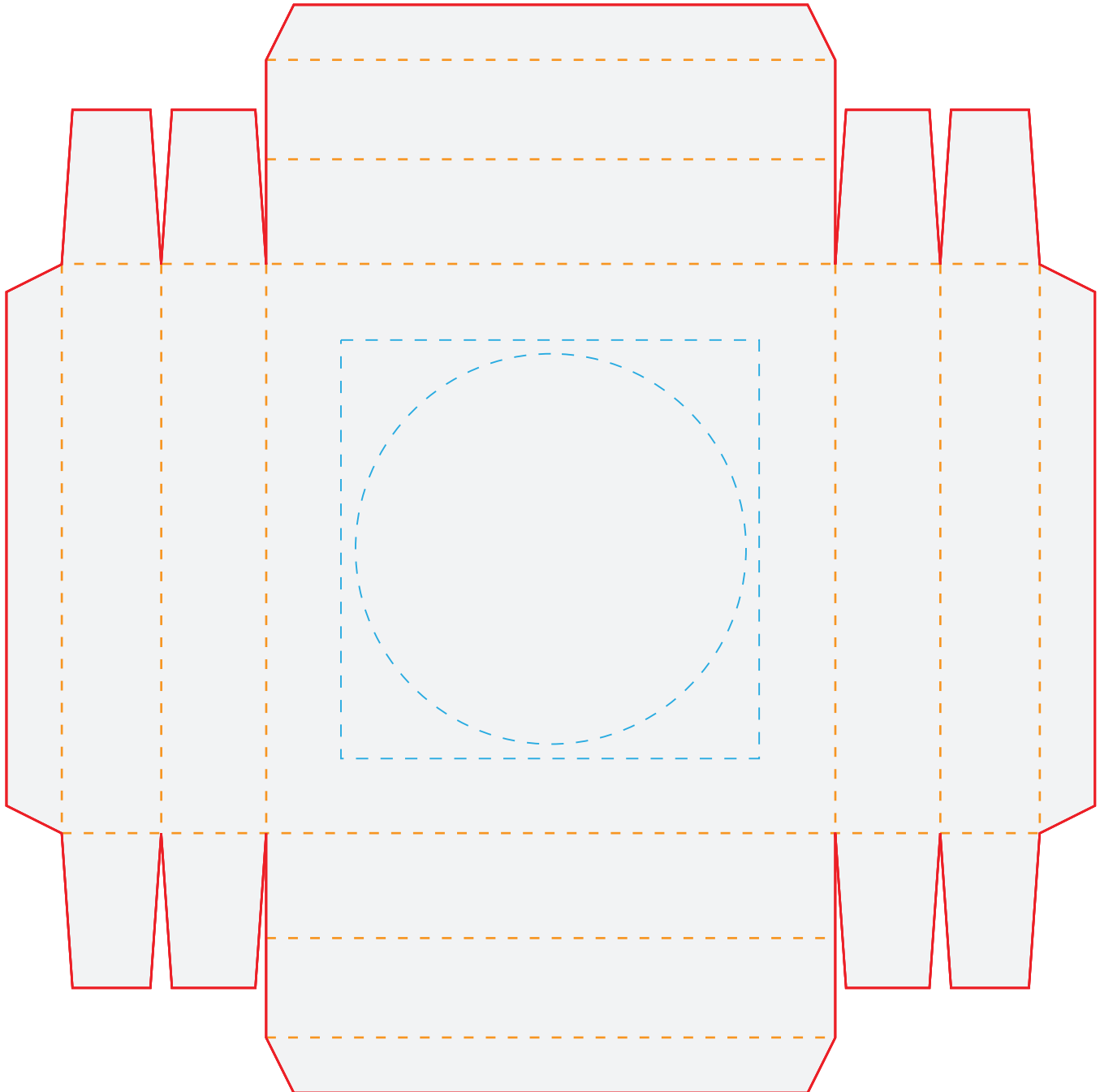
NOTE: ART SHOWN AT 100%

Blue dotted line marks artwork safe zone

All artwork must bleed to red line

Orange dotted line marks fold line

DO NOT PRINT GUIDELINES



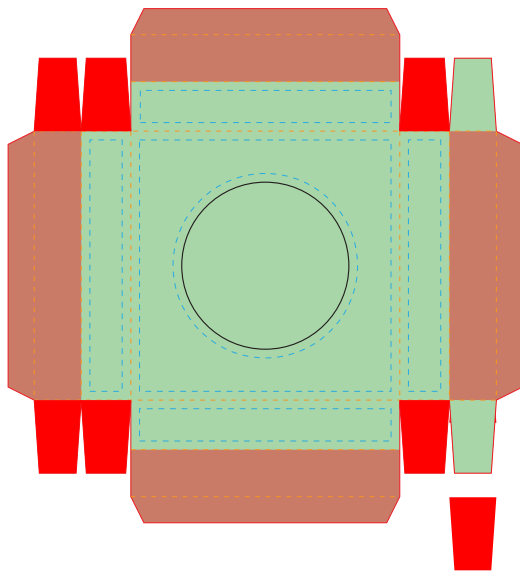
DESIGN NOTES

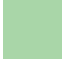


CMYK PRINTING - PMS COLORS ARE FOR REFERENCE ONLY

SLIM SOCK BOX

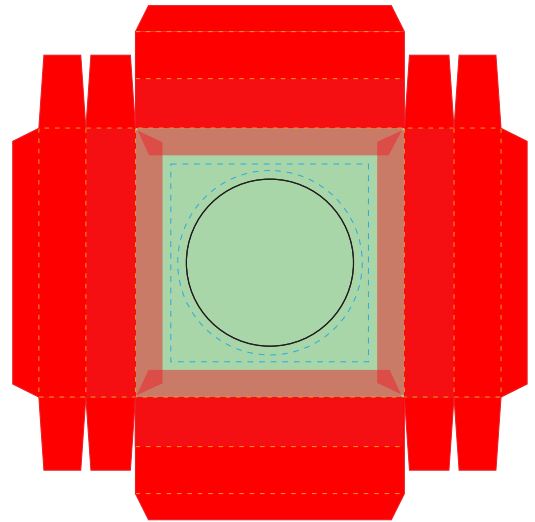
TOP OF BOX : ARTWORK REFERENCE




EXTERIOR ARTWORK PLACEMENT REFERENCE



-  AREAS WILL BE VISIBLE ONCE ASSEMBLED
-  AREAS WILL BE HIDDEN ONCE ASSEMBLED
-  AREAS WILL BE FOLDED TO INTERIOR OF BOX

INTERIOR ARTWORK PLACEMENT REFERENCE



-  AREAS WILL BE VISIBLE ONCE ASSEMBLED
-  AREAS WILL BE HIDDEN ONCE ASSEMBLED
-  EXTERIOR PRINTING VISIBLE ON INTERIOR ONCE ASSEMBLED

SLIM SOCK BOX

BOTTOM OF BOX : EXTERIOR PRINTING

Artwork Layout

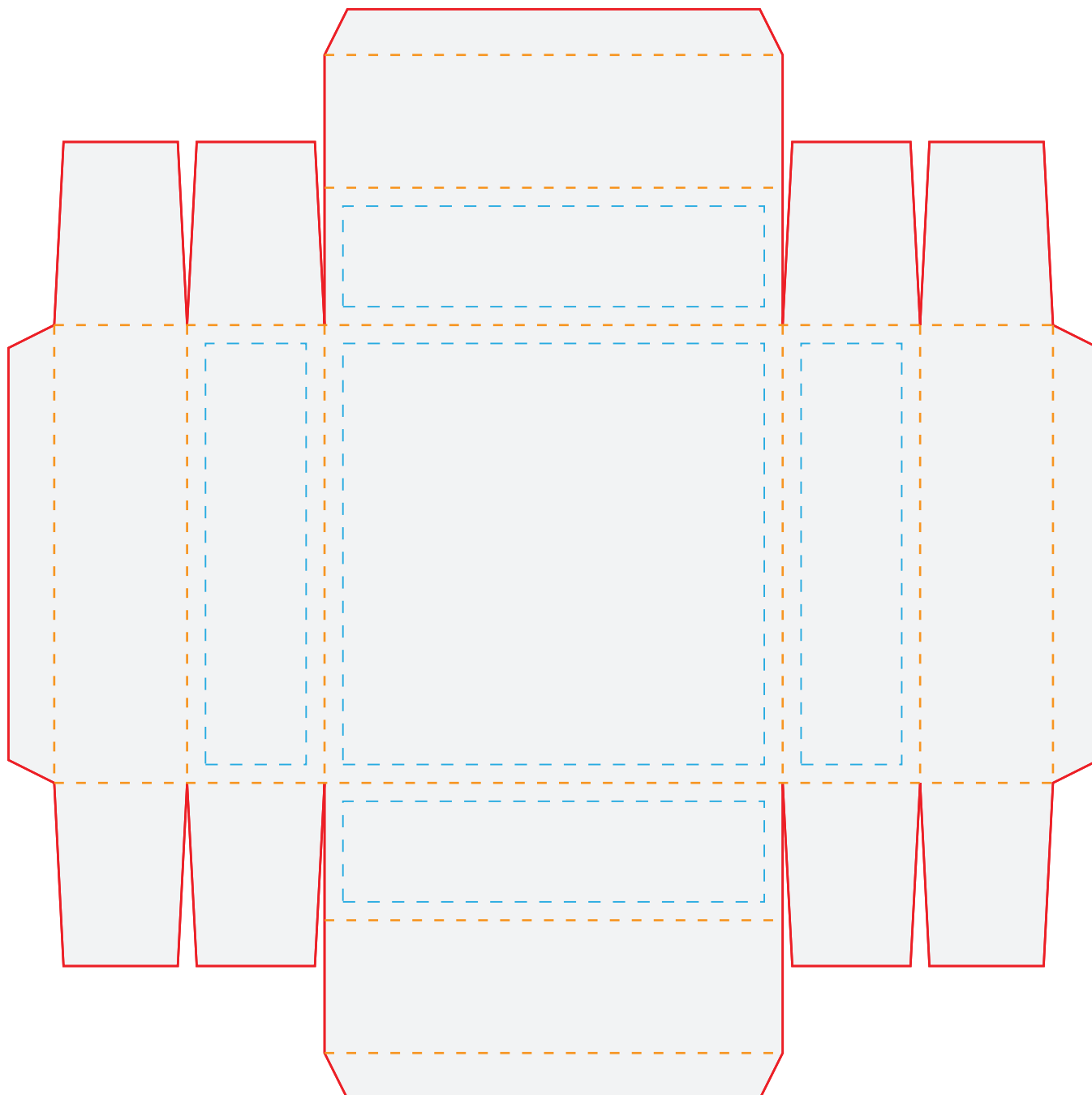
NOTE: ART SHOWN AT 100%

Blue dotted line marks artwork safe zone

All artwork must bleed to red line

Orange dotted line marks fold line

DO NOT PRINT GUIDELINES



DESIGN NOTES

CMYK PRINTING - PMS COLORS ARE FOR REFERENCE ONLY

SLIM SOCK BOX

BOTTOM OF BOX : INTERIOR PRINTING

Artwork Layout

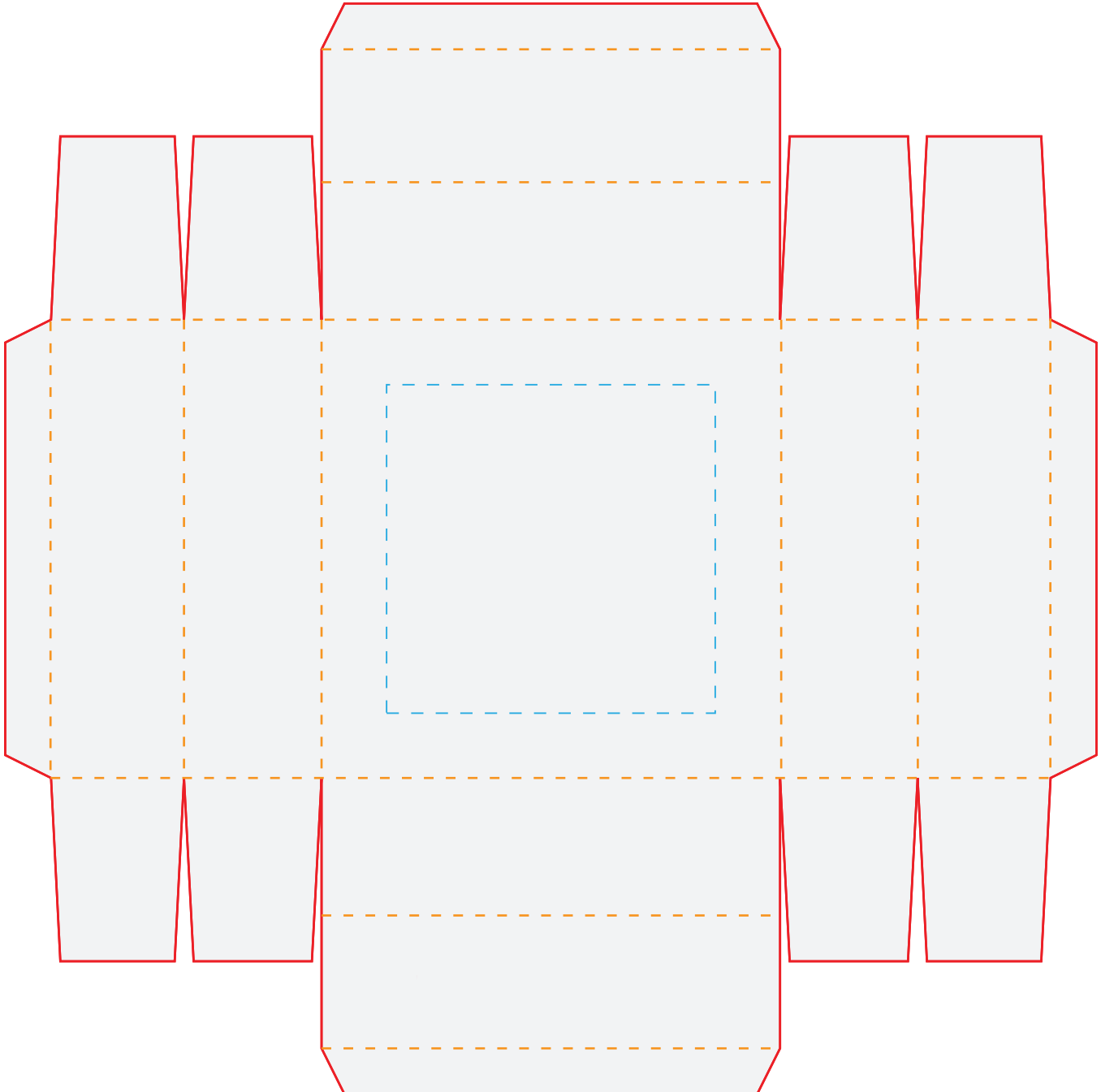
NOTE: ART SHOWN AT 100%

Blue dotted line marks artwork safe zone

All artwork must bleed to red line

Orange dotted line marks fold line

DO NOT PRINT GUIDELINES



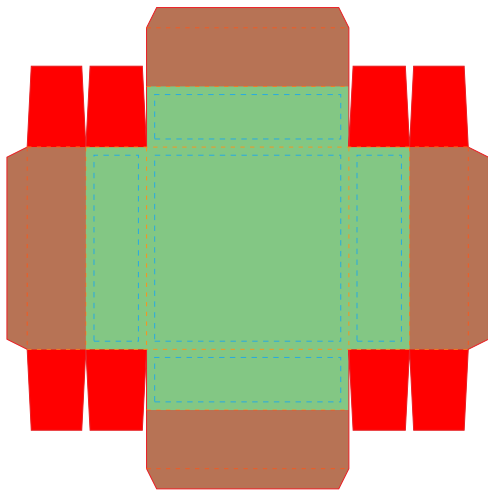
DESIGN NOTES




CMYK PRINTING - PMS COLORS ARE FOR REFERENCE ONLY

SLIM SOCK BOX

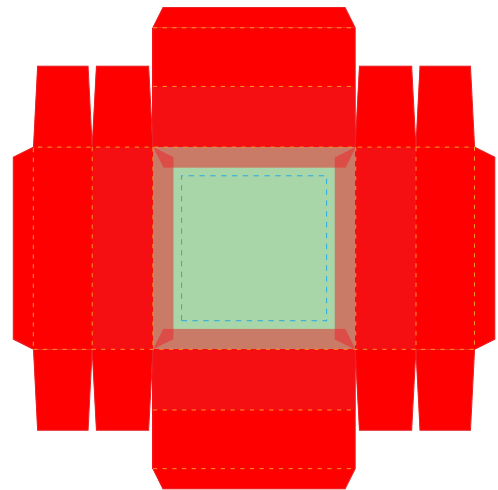
BOTTOM OF BOX : ARTWORK REFERENCE




EXTERIOR ARTWORK PLACEMENT REFERENCE



-  AREAS WILL BE VISIBLE ONCE ASSEMBLED
-  AREAS WILL BE HIDDEN ONCE ASSEMBLED
-  AREAS WILL BE FOLDED TO INTERIOR OF BOX

INTERIOR ARTWORK PLACEMENT REFERENCE



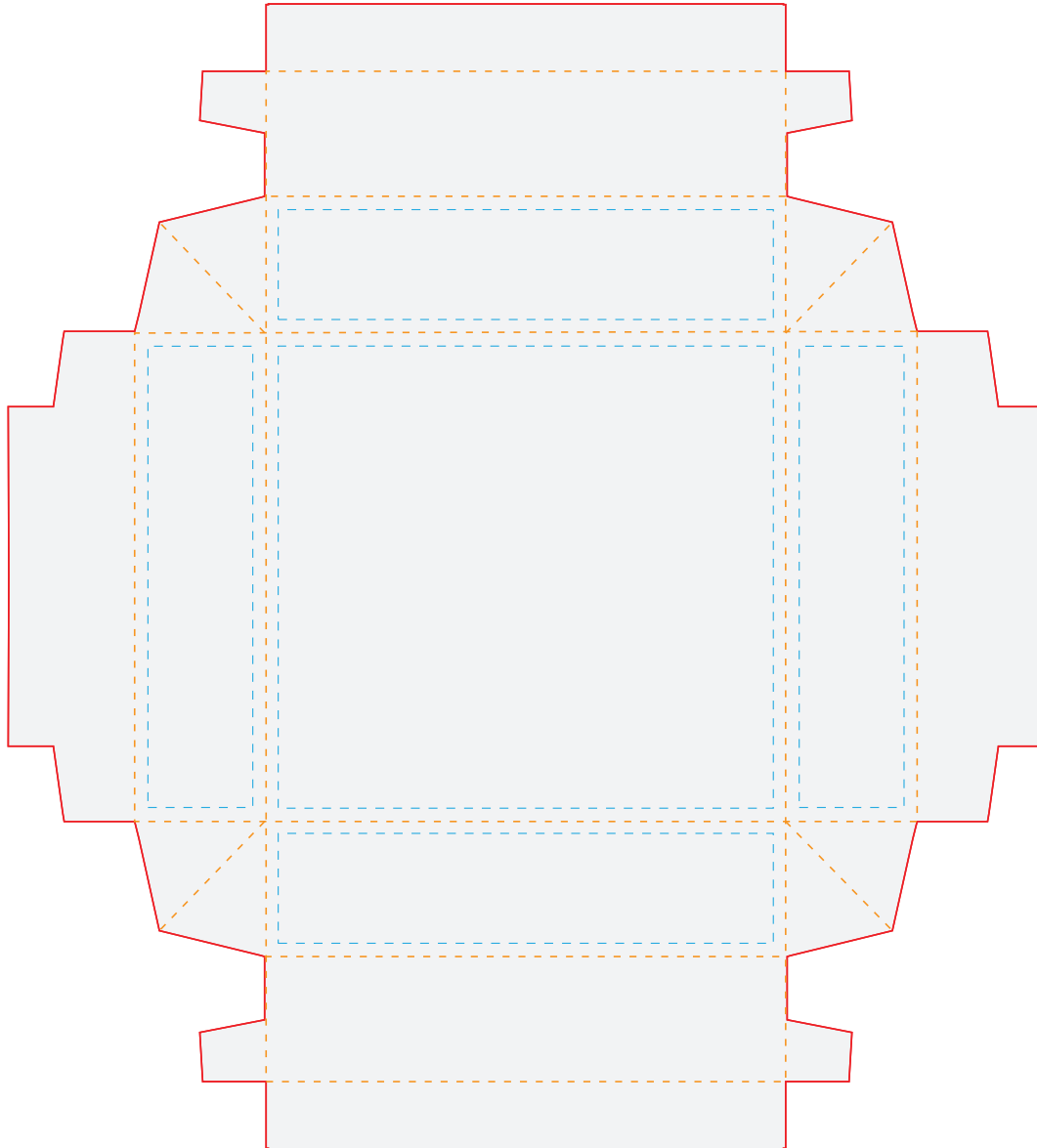
-  AREAS WILL BE VISIBLE ONCE ASSEMBLED
-  AREAS WILL BE HIDDEN ONCE ASSEMBLED
-  EXTERIOR PRINTING VISIBLE ON INTERIOR ONCE ASSEMBLED

STANDARD SOCK BOX

TOP OF BOX : EXTERIOR PRINTING

Artwork Layout

NOTE: ART SHOWN A 60%
Blue dotted line marks artwork safe zone
All artwork must bleed to red line
Orange dotted line marks fold line
DO NOT PRINT GUIDELINES



DESIGN NOTES

CMYK PRINTING - PMS COLORS ARE FOR REFERENCE ONLY

STANDARD SOCK BOX

TOP OF BOX : INTERIOR PRINTING

Artwork Layout

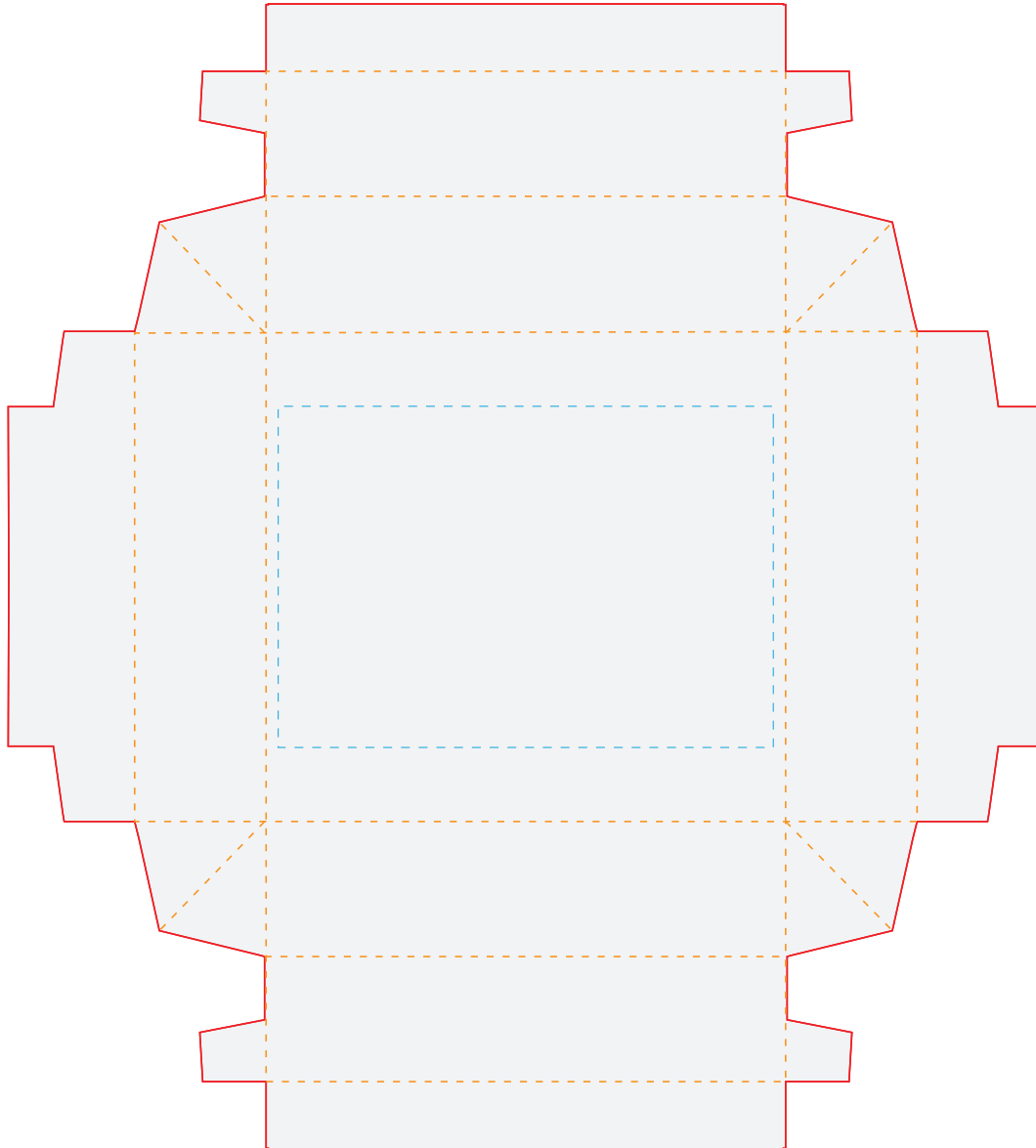
NOTE: ART SHOWN A 60%

Blue dotted line marks artwork safe zone

All artwork must bleed to red line

Orange dotted line marks fold line

DO NOT PRINT GUIDELINES



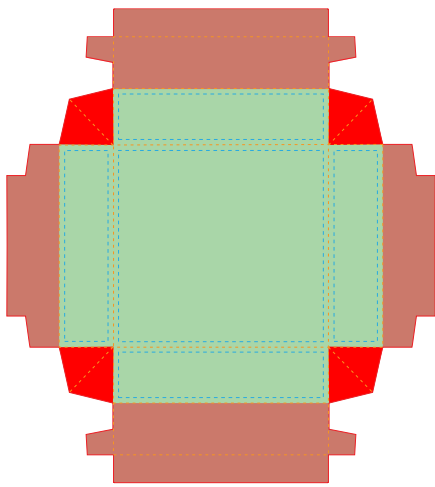
DESIGN NOTES




CMYK PRINTING - PMS COLORS ARE FOR REFERENCE ONLY

STANDARD SOCK BOX

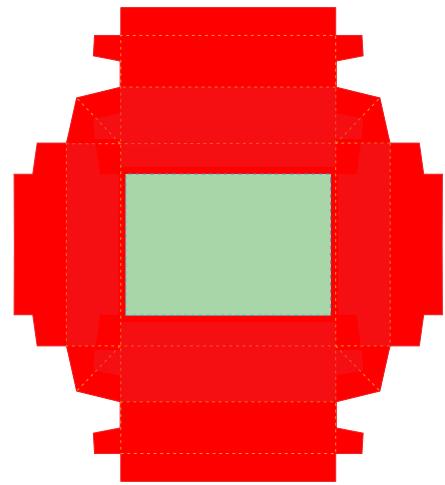
TOP OF BOX : ARTWORK REFERENCE




ARTWORK PLACEMENT REFERENCE



-  AREAS WILL BE VISIBLE ONCE ASSEMBLED
-  AREAS WILL BE HIDDEN ONCE ASSEMBLED
-  AREAS WILL BE FOLDED TO INTERIOR OF BOX

ARTWORK PLACEMENT REFERENCE



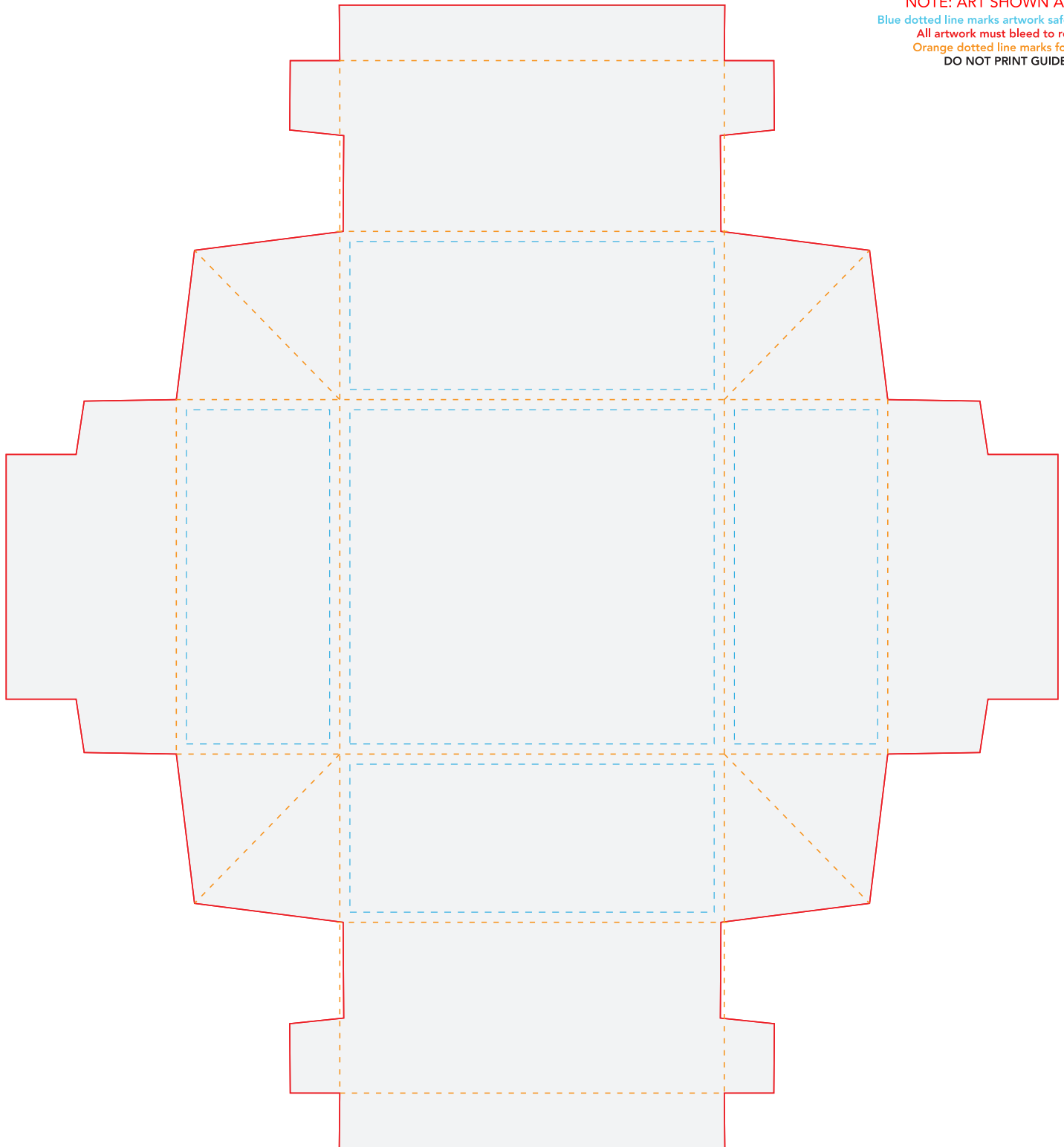
-  AREAS WILL BE VISIBLE ONCE ASSEMBLED
-  AREAS WILL BE HIDDEN ONCE ASSEMBLED
-  EXTERIOR PRINTING VISIBLE ON INTERIOR ONCE ASSEMBLED

STANDARD SOCK BOX

BOTTOM OF BOX : EXTERIOR PRINTING

Artwork Layout

NOTE: ART SHOWN A 60%
Blue dotted line marks artwork safe zone
All artwork must bleed to red line
Orange dotted line marks fold line
DO NOT PRINT GUIDELINES



DESIGN NOTES

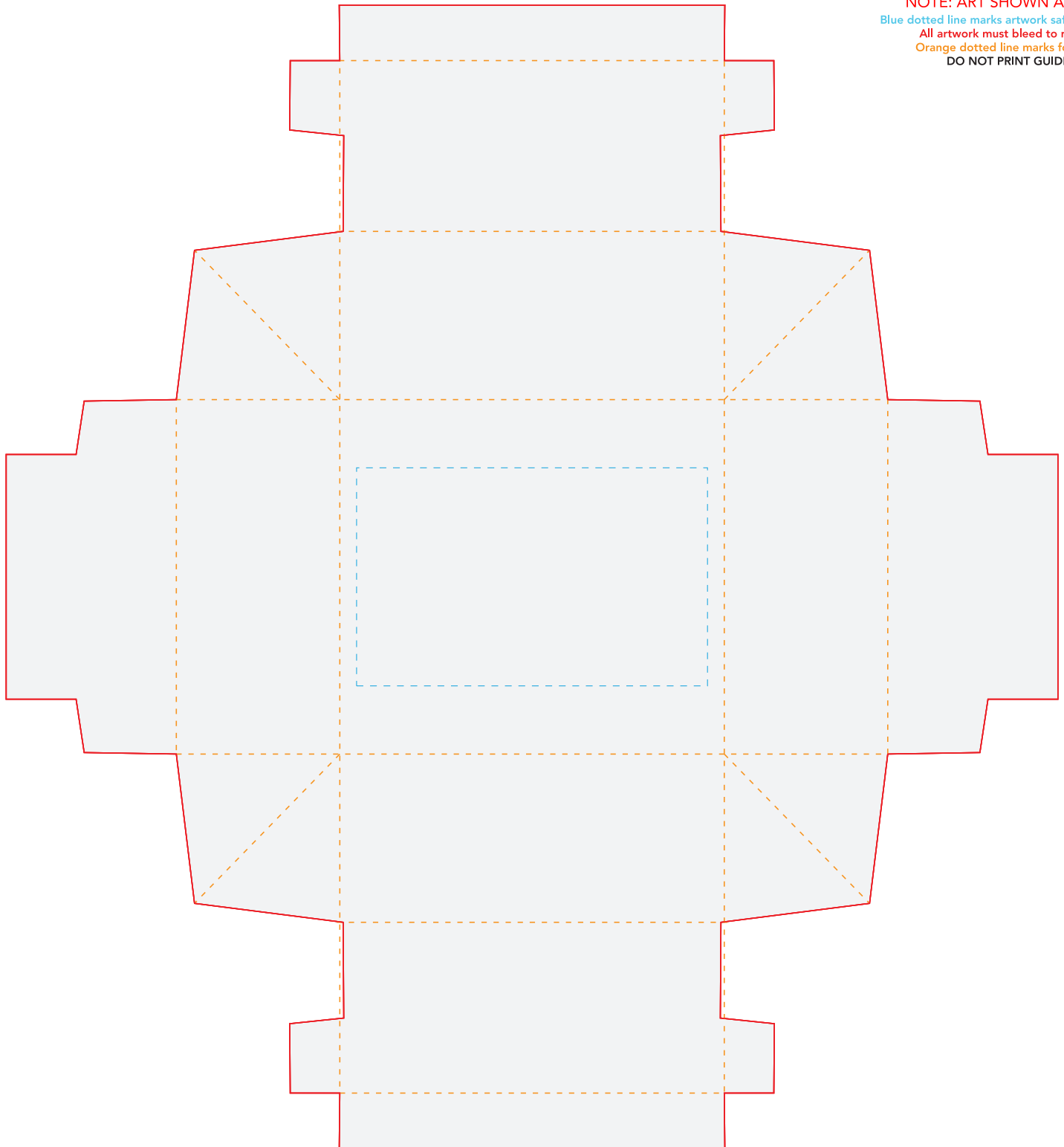
CMYK PRINTING - PMS COLORS ARE FOR REFERENCE ONLY

STANDARD SOCK BOX

BOTTOM OF BOX : INTERIOR PRINTING

Artwork Layout

NOTE: ART SHOWN A 60%
Blue dotted line marks artwork safe zone
All artwork must bleed to red line
Orange dotted line marks fold line
DO NOT PRINT GUIDELINES



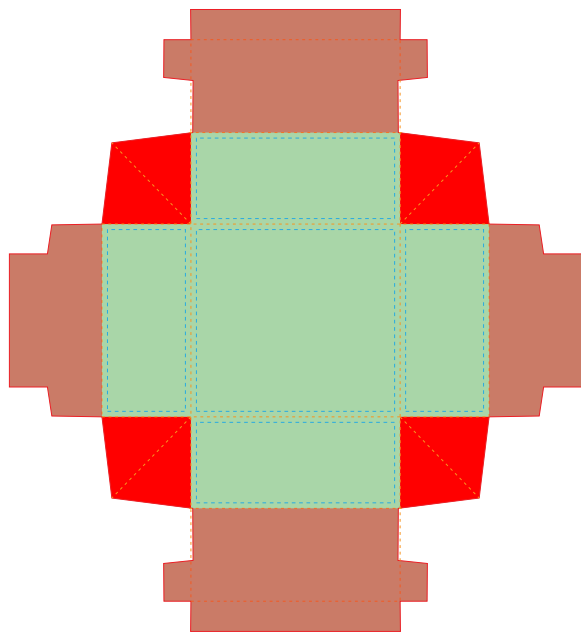
DESIGN NOTES




CMYK PRINTING - PMS COLORS ARE FOR REFERENCE ONLY

STANDARD SOCK BOX

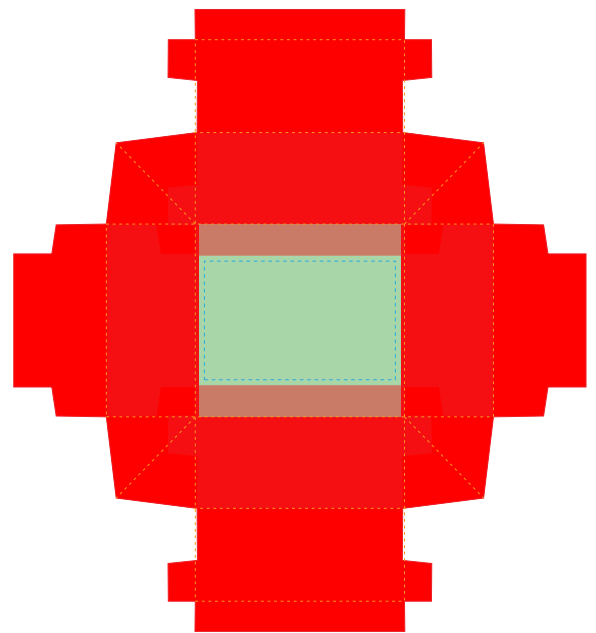
BOTTOM OF BOX : ARTWORK REFERENCE




ARTWORK PLACEMENT REFERENCE



-  AREAS WILL BE VISIBLE ONCE ASSEMBLED
-  AREAS WILL BE HIDDEN ONCE ASSEMBLED
-  AREAS WILL BE FOLDED TO INTERIOR OF BOX

ARTWORK PLACEMENT REFERENCE



-  AREAS WILL BE VISIBLE ONCE ASSEMBLED
-  AREAS WILL BE HIDDEN ONCE ASSEMBLED
-  EXTERIOR PRINTING VISIBLE ON INTERIOR ONCE ASSEMBLED