

PREMIUM CABLE KNIT GLOVES

Artwork Layout

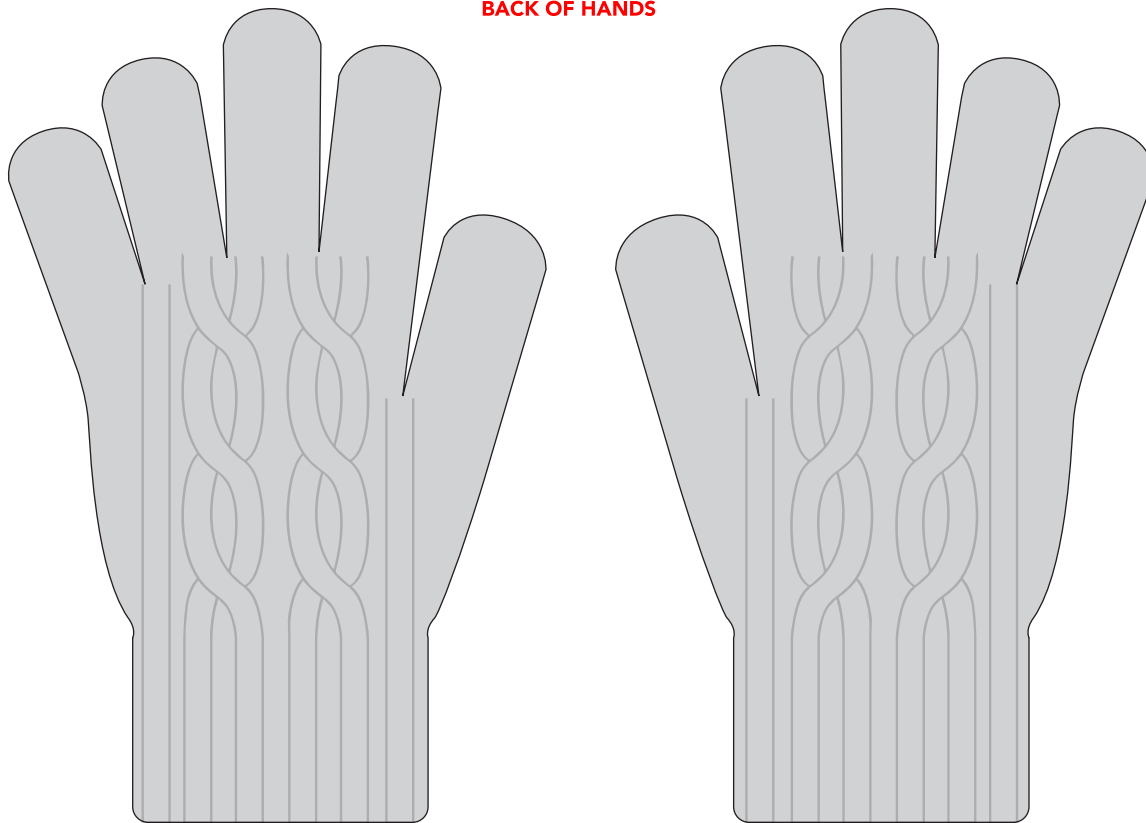
NOTE: ART SHOWN AT 50%

Artwork must be within blue dotted lines
Black line marks product edge

Product Dimensions

Total Height (Includes cuff)
IN: 8.5" | CM: 21.59cm
Palm Width
IN: 3.25" | CM: 8.25cm
Cuff Height
IN: 1.92" | CM: 4.87cm
Cuff Width
IN: 3.08" | CM: 7.82cm

BACK OF HANDS



DESIGN INFORMATION

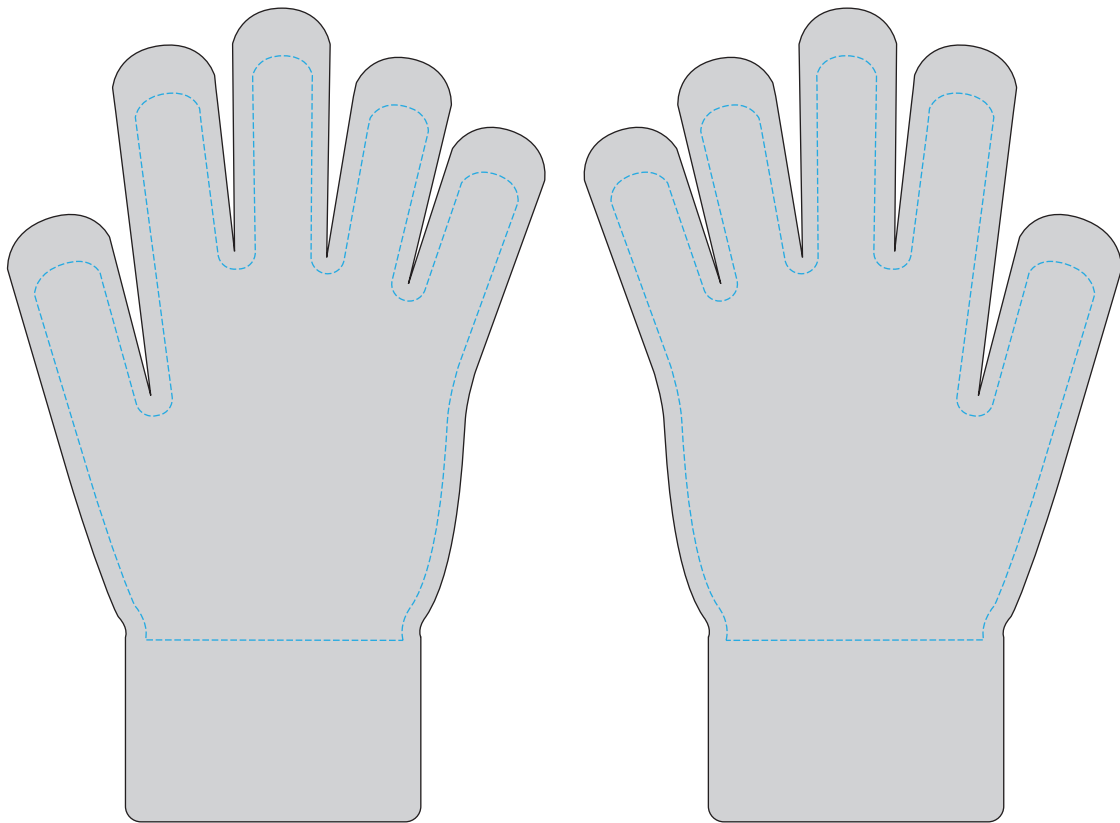
Base product is a solid color glove + woven tag

PREMIUM CABLE KNIT GLOVES

Artwork Layout

NOTE: ART SHOWN AT 50%

PALM OF HANDS



DESIGN INFORMATION

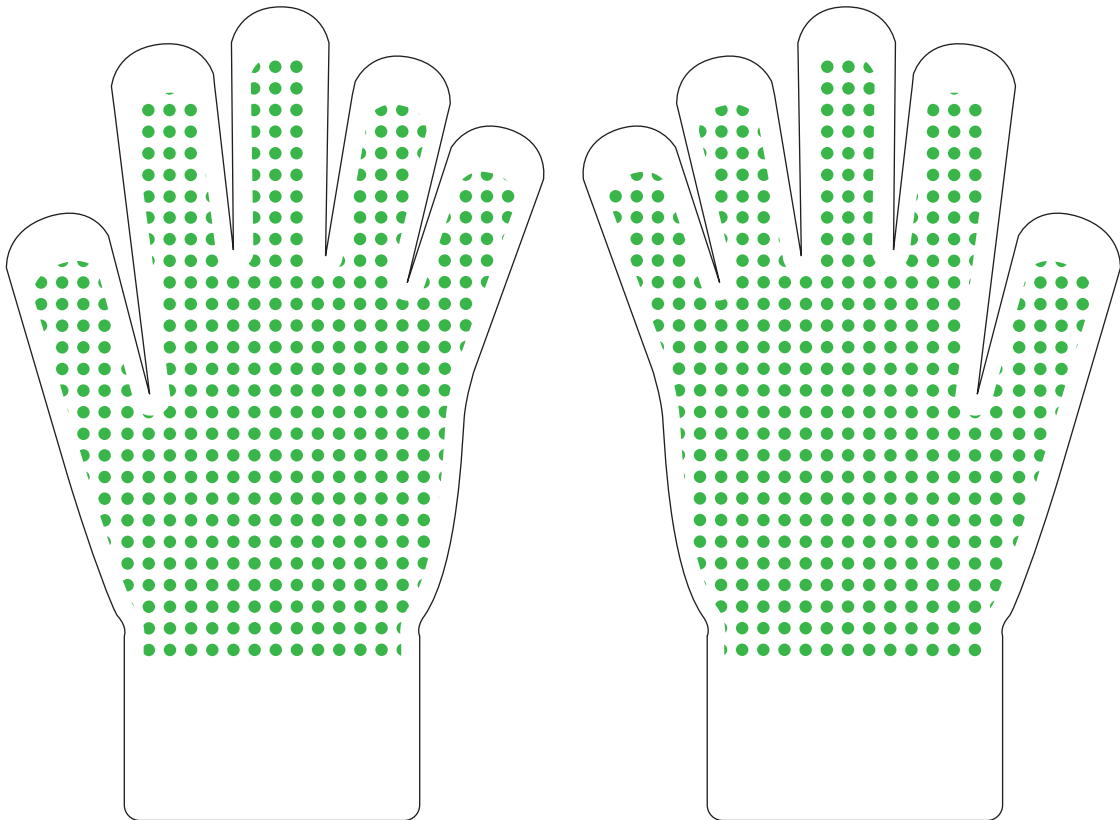
Up to 4 colors can be printed on glove
Artwork must be within blue dotted lines

PREMIUM CABLE KNIT GLOVES

RUBBER GRIPS

Artwork Layout

NOTE: ART SHOWN AT 50%



DESIGN INFORMATION

Only 1 color can be used if using standard dot pattern
Up to 4 colors can be used for custom rubber gripping

PREMIUM CABLE KNIT GLOVES

WOVEN TAGS

Artwork Layout

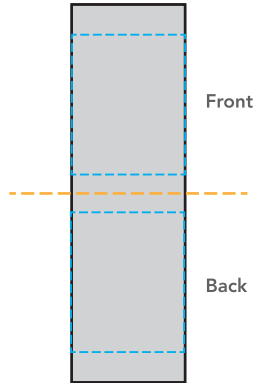
NOTE: ART SHOWN AT 100%

Blue dotted line marks artwork safe zone

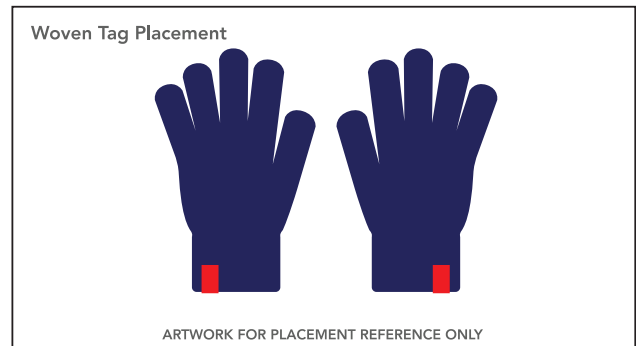
Orange dotted line marks fold line

Black line marks product edge

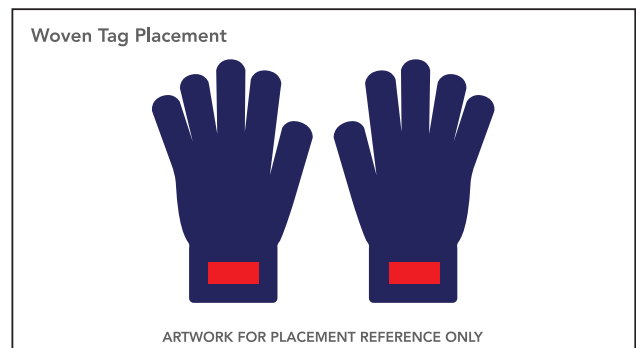
Black Dotted Line marks Stitch Line



Full Dimensions: .59" W X 1.97" H
Folded at: .985"



Final Dimensions: 1.75" W X .75" H



DESIGN INFORMATION
Up to 7 colors can be used
All colors are closest match only
Artwork must fall within blue dotted lines

PREMIUM CABLE KNIT GLOVES

VEGAN LEATHER PATCH

Artwork Layout

NOTE: ART SHOWN AT 100%

Blue dotted line marks artwork safe zone

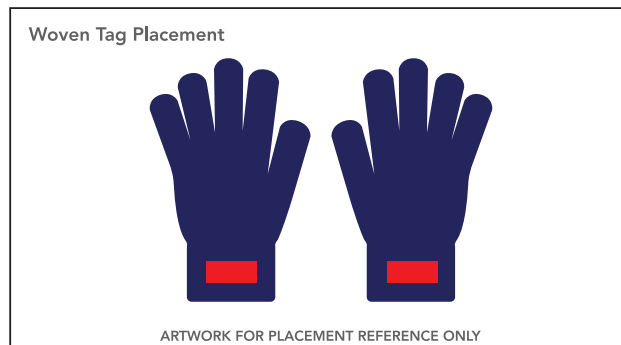
Orange dotted line marks fold line

Black line marks product edge

Black Dotted Line marks Stitch Line



Final Dimensions: 1.75" W X .75" H



Black

LOGO

Orange Brown
PMS 7566 C

LOGO

Dark Brown
PMS 7582 C

DESIGN INFORMATION

Vegan leather patches are closest match to 3 colors only
Artwork must fall within blue dotted lines