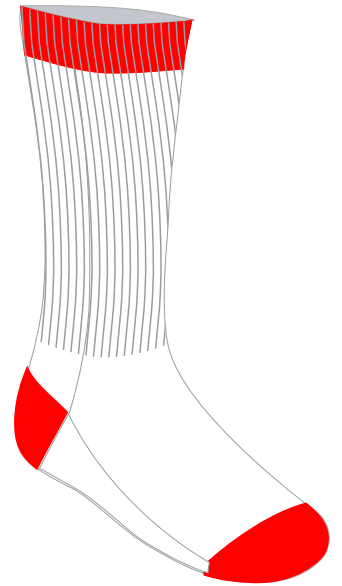
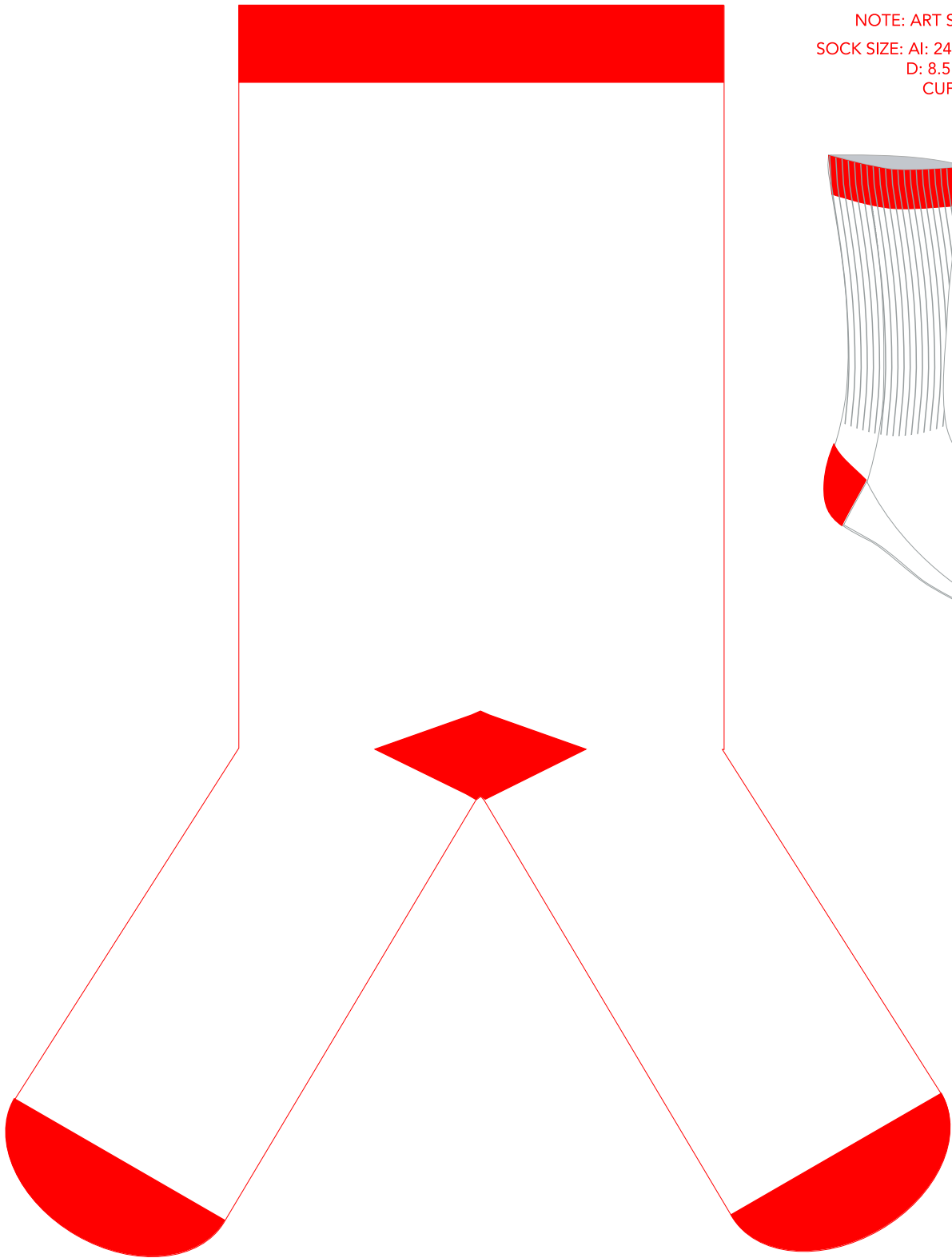


ATHLETIC SOCKS - RIBBED

Artwork Layout

NOTE: ART SHOWN AT 50%
SOCK SIZE: AI: 24 cm, AFT: 20 cm,
D: 8.5 cm, DFR: 8.5 cm
CUFF SIZE: 2.5 cm H



ATHLETIC SOCKS - RIBBED

Flat Artwork Layout

NOTE: ART SHOWN AT 50%

SOCK SIZE: AI: 24 cm, AFT: 20 cm,
D: 8.5 cm, DFR: 8.5 cm
CUFF SIZE: 2.5 cm H



**Dotted line shows where the heel is placed in the design. Make sure all full art is above of below that line.

ATHLETIC SOCKS - RIBBED

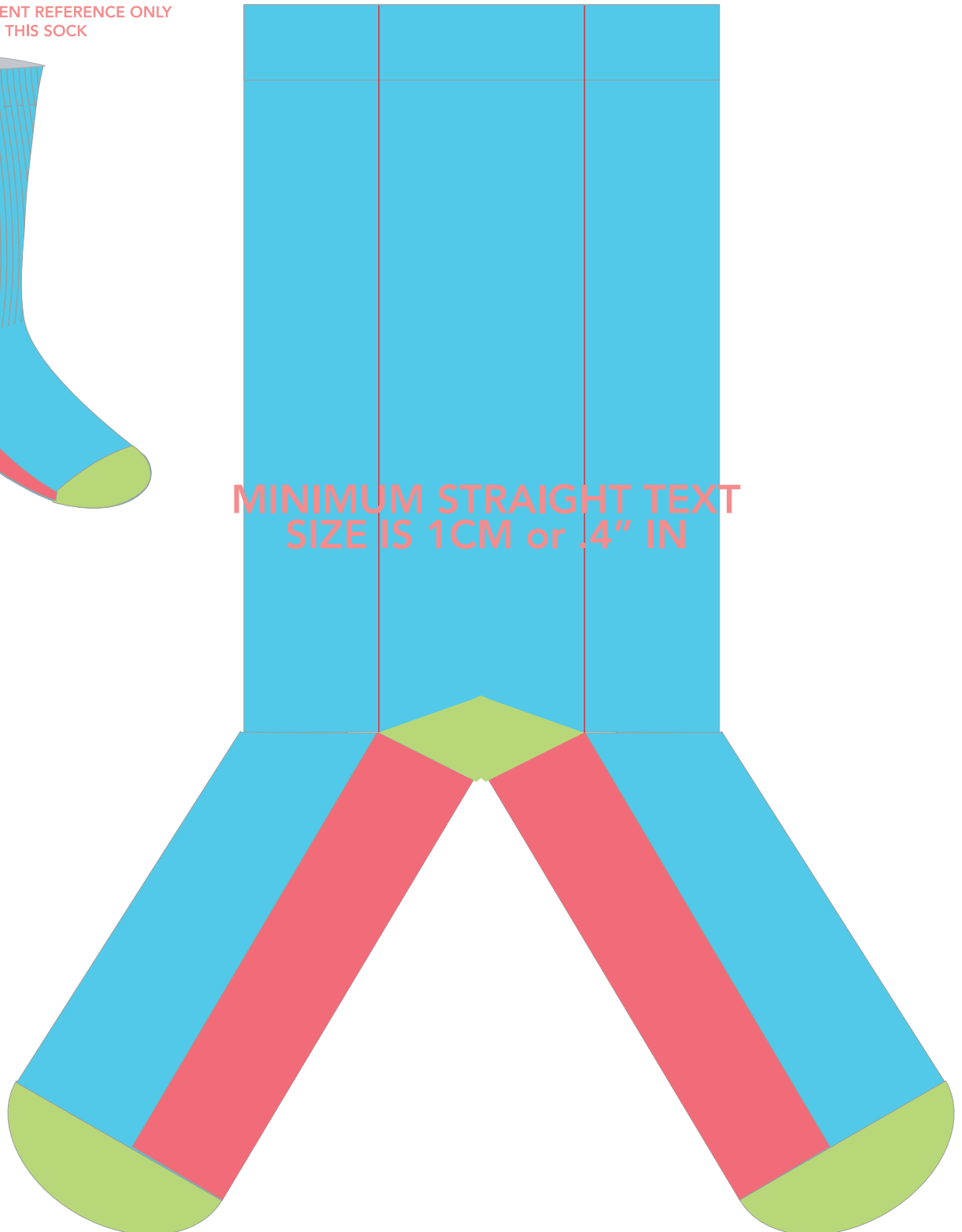
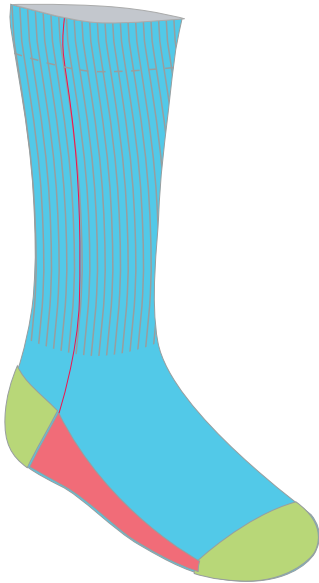
HOW TO USE

1. Use the reference sock to understand what each part of the template represents.
2. Please ensure your design is continuous around the entire sock. Keep in mind the sock is a tube.
3. Please limit your design to 6 total colors (3 PMS matched, 3 closest matches)
NOTE: Toe, heel and cuff colors are included in the 6 colors.
4. Use the guide in the reference sock and template to ensure your designs meet minimum text and line size.
 - All text that is straight must be at least .4" IN or 1 CM in height.
 - Diagonal text must be a minimum of .6" IN or 1.5 CM in height.
 - Lines must be at least .062" IN or .15 CM in width.
5. The toes and heel cannot be printed on.
6. The cuff can be printed, however, more spandex is used in the knitting process in the cuff which results in some distortion of any printing within it.

ATHLETIC SOCKS - RIBBED

REFERENCE GUIDE

SOCK FOR TEMPLATE PLACEMENT REFERENCE ONLY
DO NOT DESIGN IN THIS SOCK



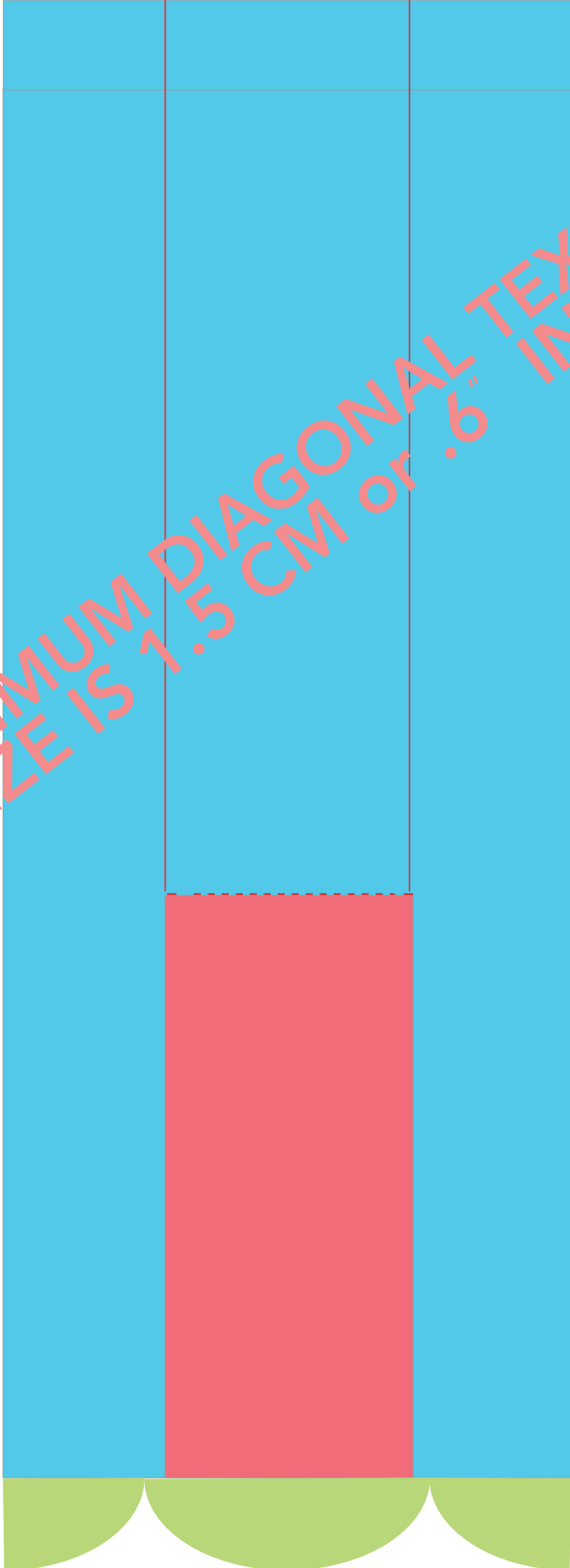
ATHLETIC SOCKS - RIBBED

REFERENCE GUIDE

MINIMUM LINE SIZE IS .15 CM or .062" IN
USE THESE LINES AS GUIDES



MINIMUM DIAGONAL TEXT
SIZE IS 1.5 CM or .6" IN

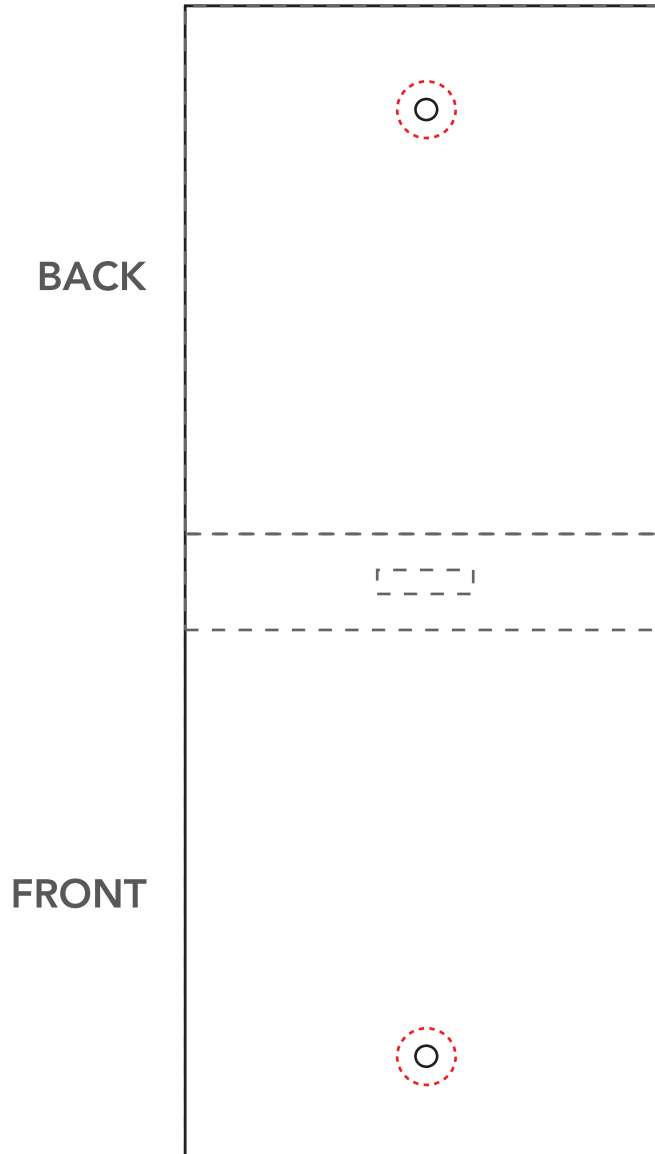


HANG TAG

Artwork Layout

NOTE: ART SHOWN AT 100%
Final Dimensions: 2.5" W X 6" H

----- Hole punch margin area
- - - - - Gray line marks Fold lines
300gsm weight

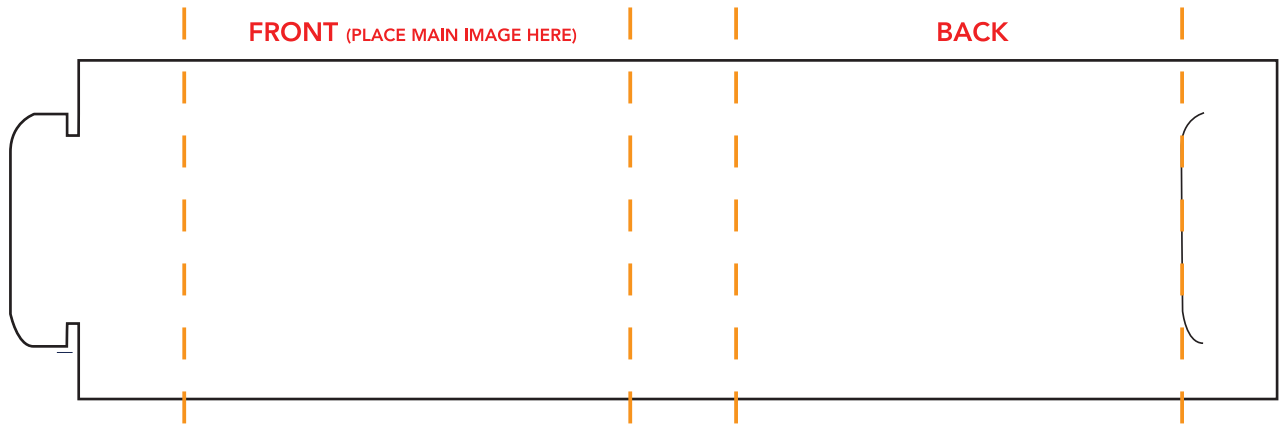


WRAP TAG

Artwork Layout

NOTE: ART SHOWN AT 70%

— — — BLACK DOTTED LINE MARKS FOLD LINE

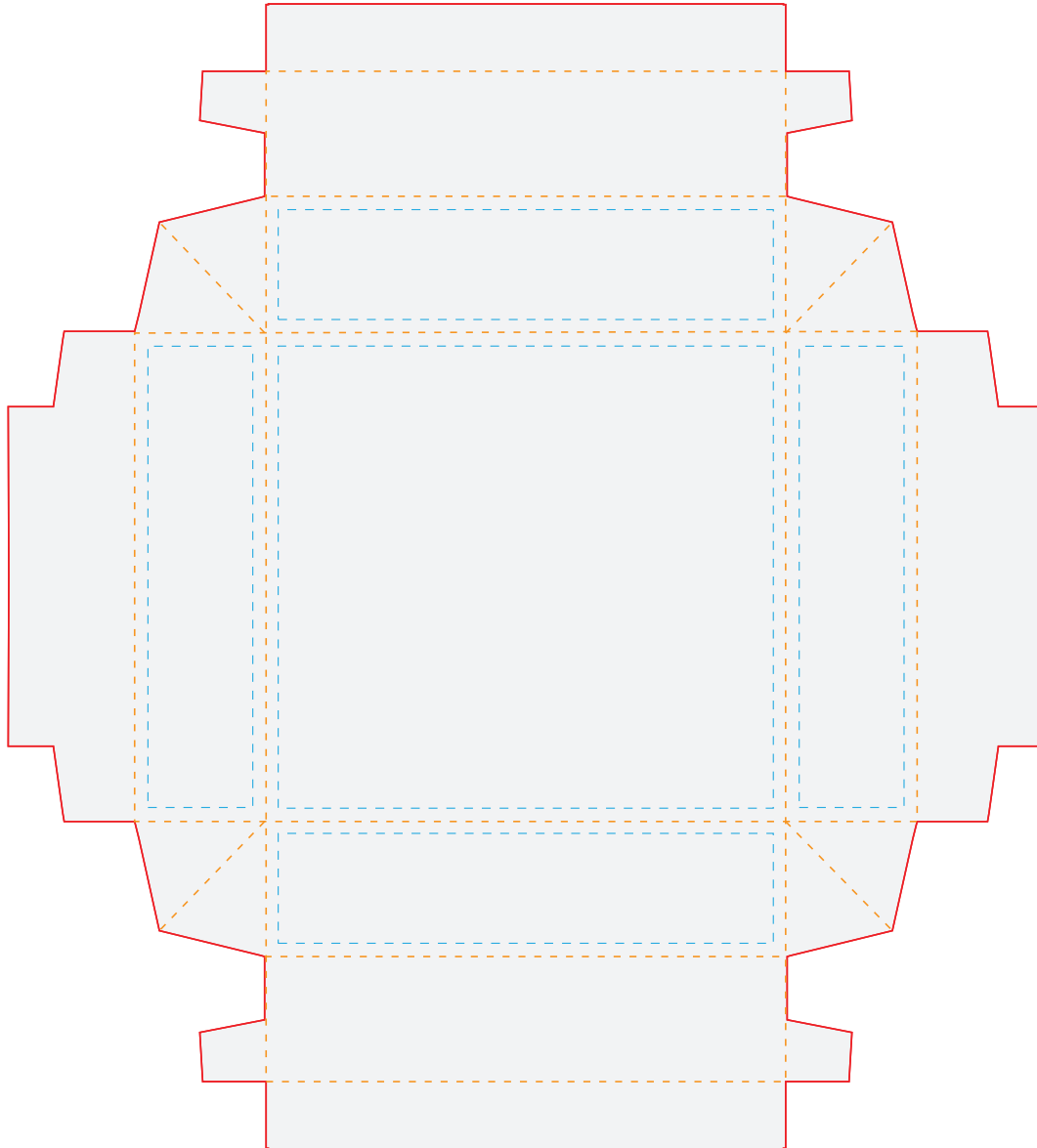


STANDARD SOCK BOX

TOP OF BOX : EXTERIOR PRINTING

Artwork Layout

NOTE: ART SHOWN A 60%
Blue dotted line marks artwork safe zone
All artwork must bleed to red line
Orange dotted line marks fold line
DO NOT PRINT GUIDELINES



DESIGN NOTES

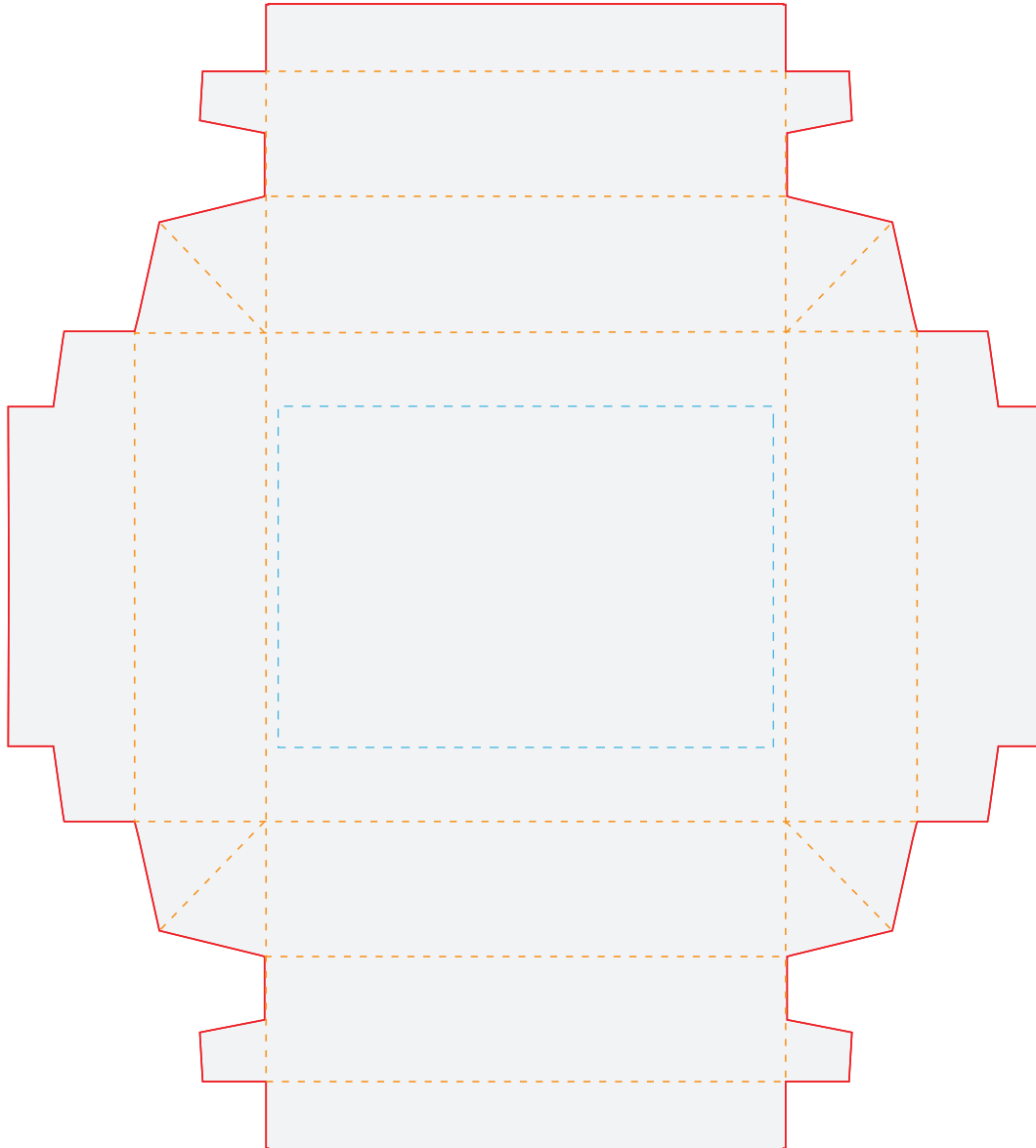
CMYK PRINTING - PMS COLORS ARE FOR REFERENCE ONLY

STANDARD SOCK BOX

TOP OF BOX : INTERIOR PRINTING

Artwork Layout

NOTE: ART SHOWN A 60%
Blue dotted line marks artwork safe zone
All artwork must bleed to red line
Orange dotted line marks fold line
DO NOT PRINT GUIDELINES



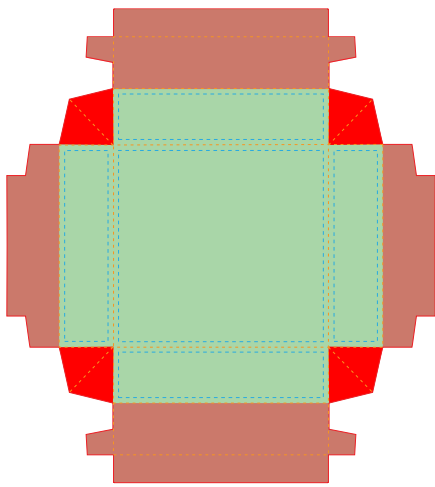
DESIGN NOTES




CMYK PRINTING - PMS COLORS ARE FOR REFERENCE ONLY

STANDARD SOCK BOX

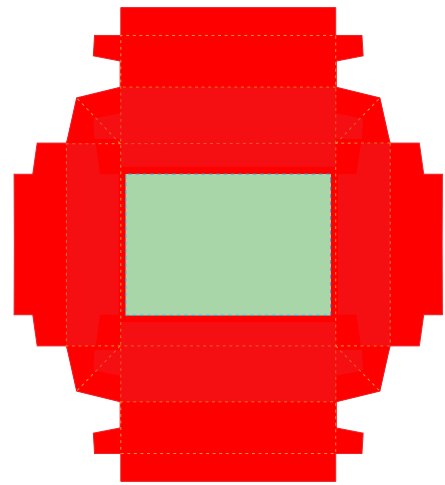
TOP OF BOX : ARTWORK REFERENCE




ARTWORK PLACEMENT REFERENCE



-  AREAS WILL BE VISIBLE ONCE ASSEMBLED
-  AREAS WILL BE HIDDEN ONCE ASSEMBLED
-  AREAS WILL BE FOLDED TO INTERIOR OF BOX

ARTWORK PLACEMENT REFERENCE



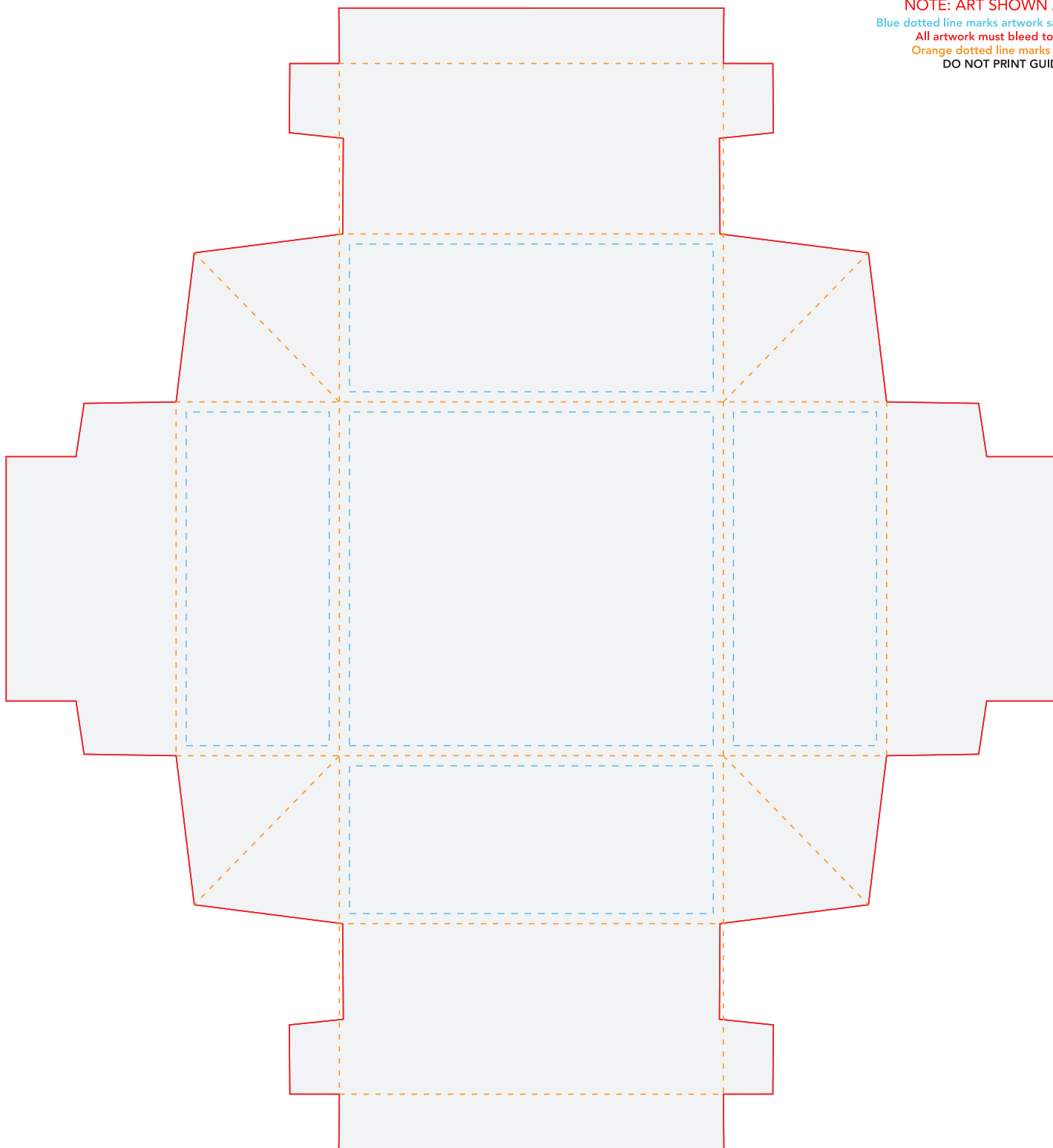
-  AREAS WILL BE VISIBLE ONCE ASSEMBLED
-  AREAS WILL BE HIDDEN ONCE ASSEMBLED
-  EXTERIOR PRINTING VISIBLE ON INTERIOR ONCE ASSEMBLED

STANDARD SOCK BOX

BOTTOM OF BOX : EXTERIOR PRINTING

Artwork Layout

NOTE: ART SHOWN A 60%
Blue dotted line marks artwork safe zone
All artwork must bleed to red line
Orange dotted line marks fold line
DO NOT PRINT GUIDELINES



DESIGN NOTES

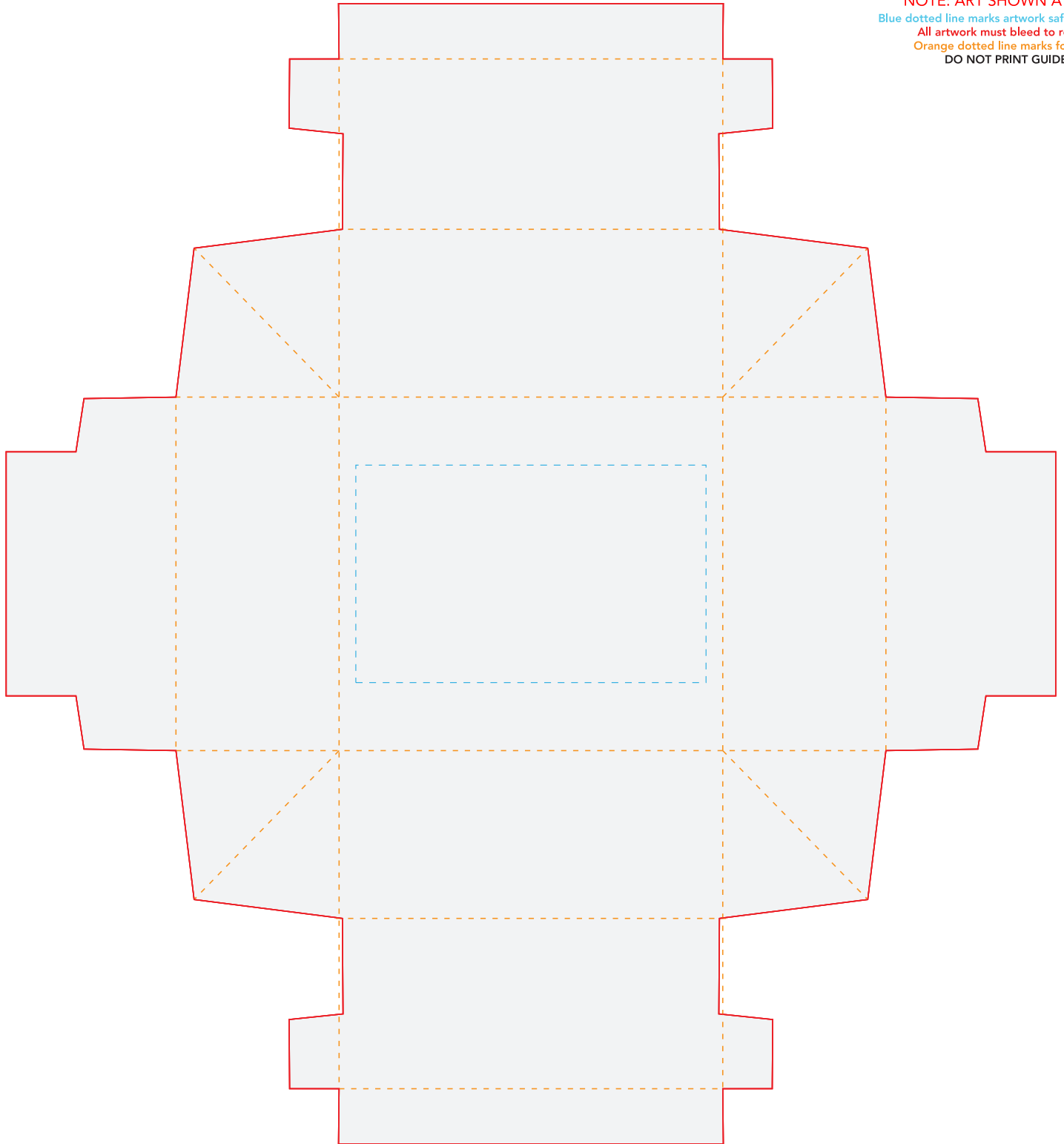
CMYK PRINTING - PMS COLORS ARE FOR REFERENCE ONLY

STANDARD SOCK BOX

BOTTOM OF BOX : INTERIOR PRINTING

Artwork Layout

NOTE: ART SHOWN A 60%
Blue dotted line marks artwork safe zone
All artwork must bleed to red line
Orange dotted line marks fold line
DO NOT PRINT GUIDELINES



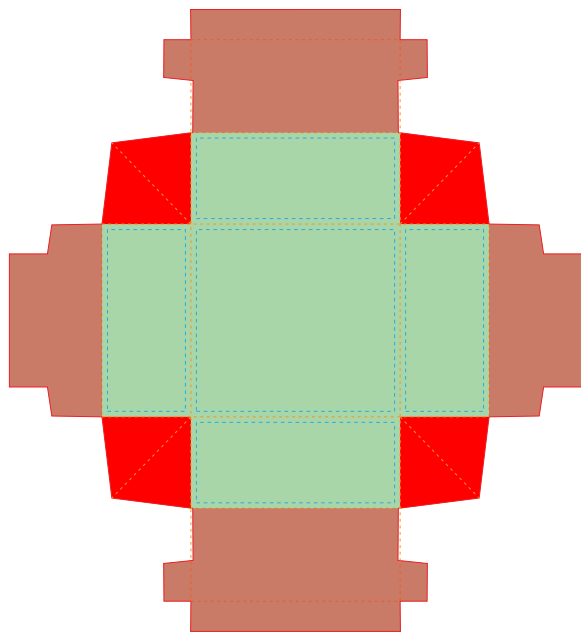
DESIGN NOTES




CMYK PRINTING - PMS COLORS ARE FOR REFERENCE ONLY

STANDARD SOCK BOX

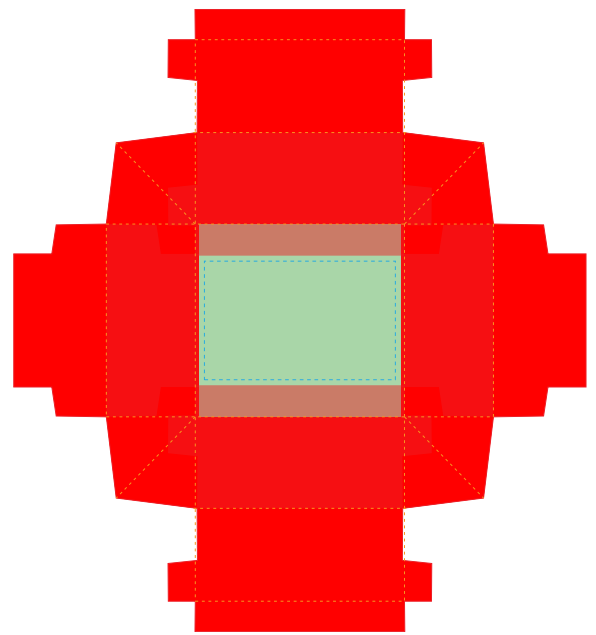
BOTTOM OF BOX : ARTWORK REFERENCE




ARTWORK PLACEMENT REFERENCE



-  AREAS WILL BE VISIBLE ONCE ASSEMBLED
-  AREAS WILL BE HIDDEN ONCE ASSEMBLED
-  AREAS WILL BE FOLDED TO INTERIOR OF BOX

ARTWORK PLACEMENT REFERENCE



-  AREAS WILL BE VISIBLE ONCE ASSEMBLED
-  AREAS WILL BE HIDDEN ONCE ASSEMBLED
-  EXTERIOR PRINTING VISIBLE ON INTERIOR ONCE ASSEMBLED

SAVER SOCKS

COLOR CHOICES

| | | | | | | |
|--|--|--|--|---|---|--|
|  Q389 (L58) PMS 2050 C Light Pink |  Q056 (L94) PMS 197 C Bubblegum |  Z060 (M144) PMS 7424 C Katie |  S066 (D22) PMS 227 C Raspberry |  S068 (D302) PMS 2048 C Rhubarb |  S107 (D330) PMS 512 C Barney |  S097 (D73) PMS 7641 C Crimson |
|  S076 (D57) PMS 1795 C Ketchup |  S094 (D125) PMS 7580 C Rust |  Z071 (M150) PMS 2029 C Alaskan Salmon |  S375 (D72*) PMS Bright Red C Flourescent Orange |  S039 (D284) PMS 151 C Tangerine |  S080 (D303) PMS 201 C Holiday Red |  S077 (D136) PMS 200 C Warm Red |
|  Q012 (L89) PMS 7401 C Buttercup |  Q031 (L212) PMS 2015 C Peach |  Z025 (M160) PMS 137 C Marigold |  Z042 (M159) 145 C Pumpkin Pie |  S040 (D187*) PMS 165 C Cheeto |  Z024 (M60) PMS 116 C Sunflower |  Z020 (M67) PMS 101 C Yellow |
|  Z019 (M90) PMS 601 C Lemon Tarte |  Q172 (L219) PMS 7486 C Pistachio Gelato |  Z466 (D28*) PMS 7488 C Slime |  S178 (D270) PMS 2272 C Fresh Grass |  Z187 (M267) PMS 2303 C Chartreuse |  Z189 (M268) PMS 2280 C Moss |  S179 (D27) PMS 348 C Shannon |
|  Q198 (L88) PMS 2413 C Bermuda |  Z199 (M83) PMS 326 C Amalfi |  Z166 (M318) PMS 7696 C Avize |  S455 (D267) PMS 2230 C Teal |  S192 (D137) PMS 3425 C Keltic |  S210 (D24) PMS 2411 C Deep Forest |  Z357 (M43*) PMS 297 C Prince George |
|  Q161 (L81) PMS 324 C Belize |  Z165 (M311) PMS 3105 C Turquoise |  Q156 (317) PMS 545 C Cloud Blue |  Q131 (L76) PMS 283 C Periwinkle |  S479 (M315*) PMS 2382 C Atlantic |  S139 (D233) PMS 7686 C Erin |  Z167 (M110) PMS 311 C Pulitzer Blue |
|  S153 (M274) PMS 2203 C Cerulean |  S145 (D77) PMS 2718 C Hydrangea |  Q114 (L85) PMS 271 C Lavendar |  Q113 (L84) PMS 2635 C Lilac |  Z115 (M153) PMS 7676 C Iris |  S119 (D260) PMS 2583 C Grape Juice |  Z356 (M230*) PMS 2123 C Orchid |
|  S149 (D170) PMS 2748 C Royal Blue |  S150 (D52) PMS 3581 C Crew |  S359 (D322) PMS 3597 C Sterling |  S140 (D320) PMS 540 C Ink |  S122 (D156) PMS 2112 C Deep Purple |  S116 (D210) PMS 2104 C Provence |  Q008 (L97) PMS 2309 C Cream |
|  Q221 (L197) PMS 4685 C Sand |  Q217 (L30) PMS 466 C Straw |  Q233 (L252) PMS 2312 C Cafe Au Lait |  S238 (D292) PMS 477 C Cinnamon |  S248 (D280) PMS 7589 C Milk Chocolate |  S111 (D258) PMS 7428 C Merlot |  S252 (D295) PMS 7517 C Coffee |
|  S501 (D51) PMS 296 C Suit Jacket |  Z311 (M45) PMS 2156 C Blue Gravel |  S443 (D343) PMS Cool Gray 11 C Elephant |  S435 (D155) PMS Cool Gray 10 C Taupe |  Q288 (L236) PMS 4276 C Tin |  Q268 (L86) PMS Cool Gray 3 C Frost |  Z312 (M39) PMS 5405 C Slate |
|  Black |  B003 Crisp White | | | | | |

*Please reference the following PMS colors using a current Pantone book for color matching against our stock Saver colors. Because of the difference in printing processes from paper to yarn, these charts will not match the final colors exactly. If you have questions or concerns about color matching, please consult with your Sales Rep or request a pre-production sample with your order.