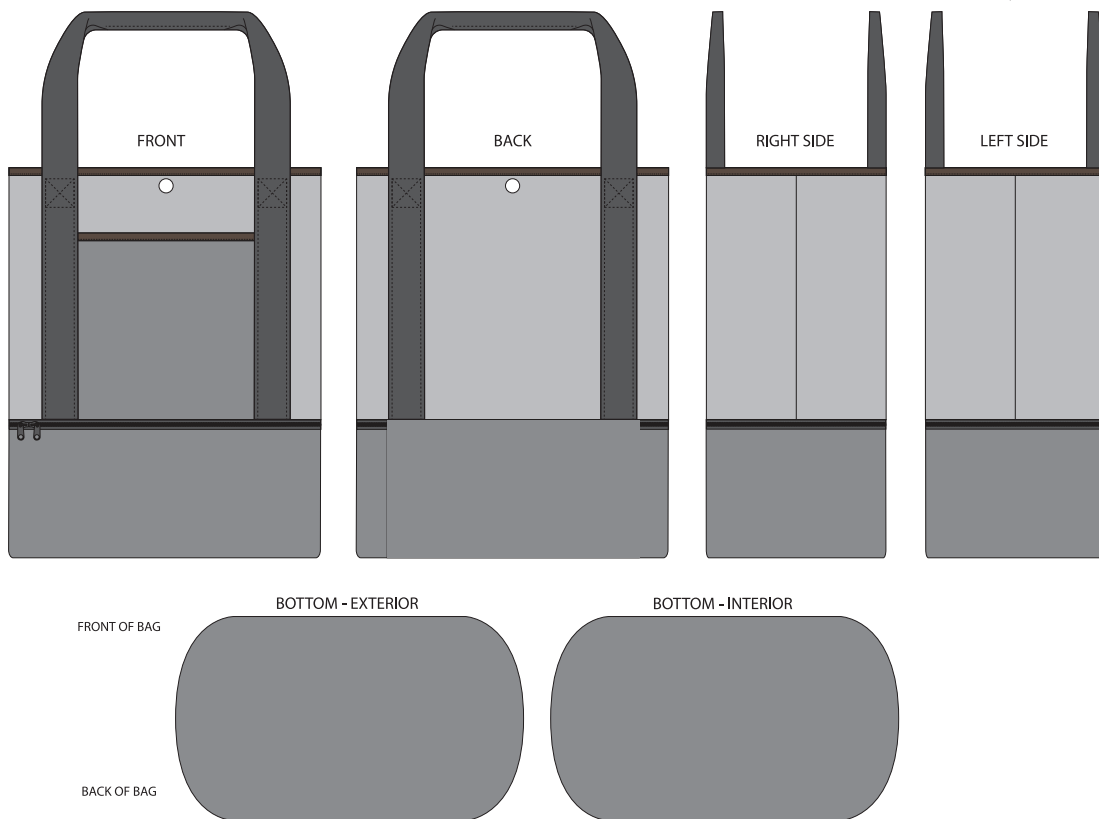


MESH TOTE WITH COOLER

Artwork Layout

NOTE: ART SHOWN AT 12.5%
Final Dimensions: IN: 19.25"W x 16.0"H

Black line marks product edge
Black Dotted Line marks Stitch Line



DESIGN INFORMATION

This is a CMYK printed product, PMS colors are for reference only.
Base product includes black or white handles. PMS handles are available as an add-on.
Snap is only available in black or white.

MESH TOTE WITH COOLER

Artwork Layout

NOTE: ART SHOWN AT 12.5%
Final Dimensions: IN: 19.25"W x 16.0"H

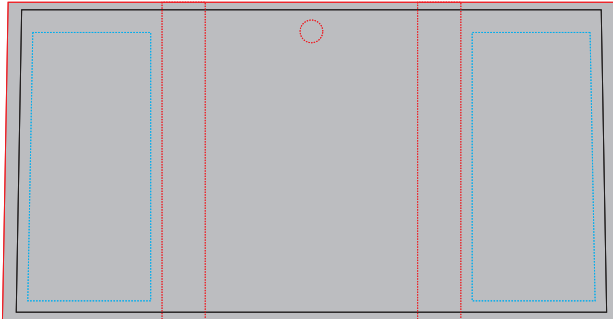
Blue dotted line marks artwork safe zone

All artwork must bleed to red line

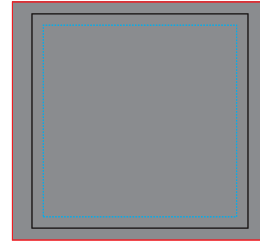
Artwork will be covered under orange dotted line

Black line marks product edge

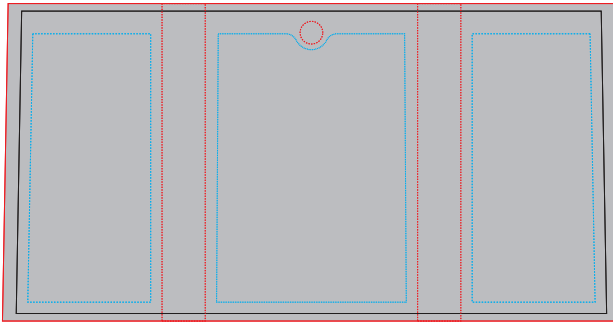
FRONT - MESH



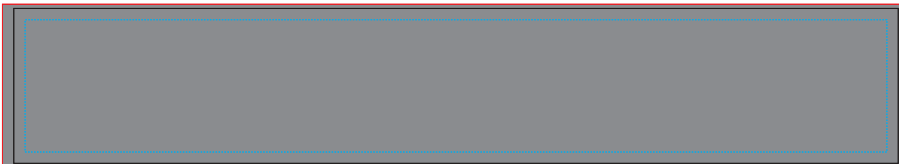
FRONT POCKET - 600D



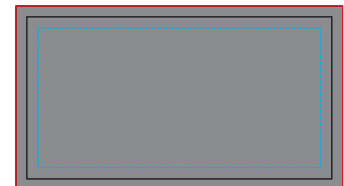
BACK - MESH



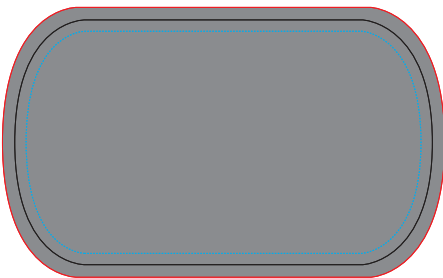
COOLER CASING - 600D



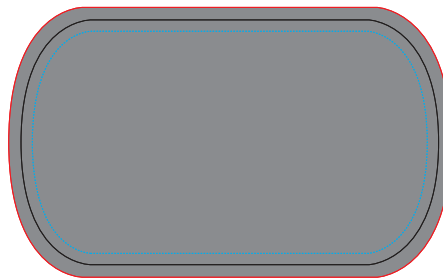
COOLER BACK - 600D



BOTTOM - COOLER EXTERIOR - 600D



BOTTOM - BAG INTERIOR - 600D



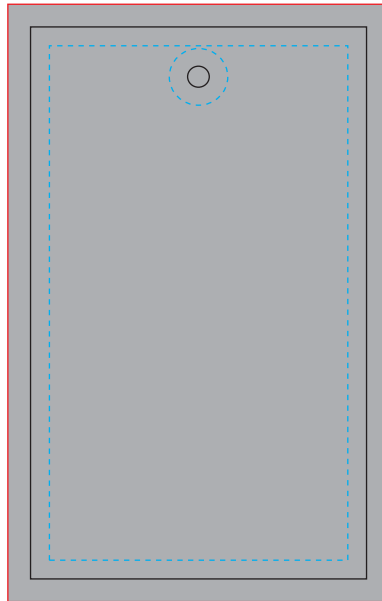
MESH TOTE WITH COOLER

Artwork Layout

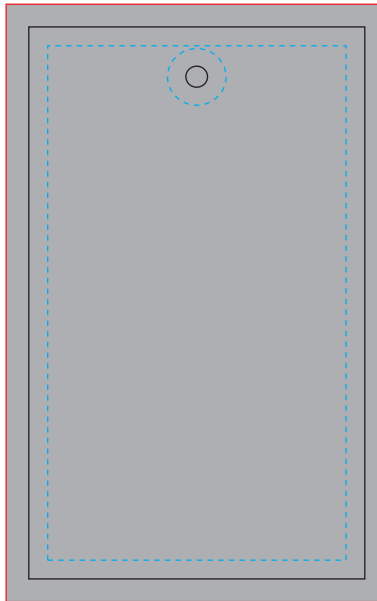
NOTE: ART SHOWN AT 100%
Final Dimensions: 1.75"W x 2.875"H

Blue dotted line marks artwork safe zone
All artwork must bleed to red line
Black line marks product edge
Black Dotted Line marks Stitch Line

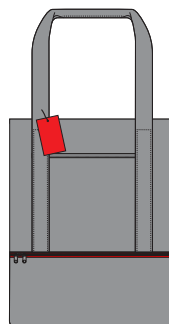
FRONT



BACK



PLACEMENT REFERENCE
HANG TAG ATTACHED TO LEFT SIDE WEBBING



FRONT

DESIGN INFORMATION

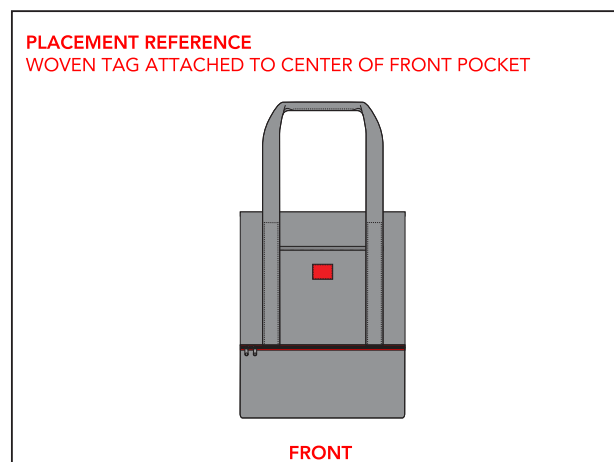
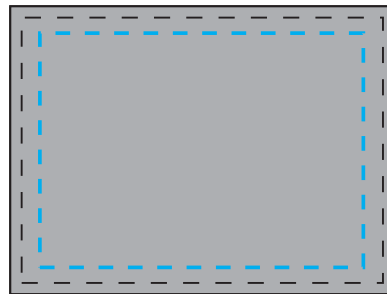
This is a CMYK printed product, PMS colors are for reference only.

MESH TOTE WITH COOLER

Artwork Layout

NOTE: ART SHOWN AT 100%
Final Dimensions: IN: 2.0"W x 1.5"H
Blue dotted line marks artwork safe zone
Black line marks product edge
Black Dotted Line marks Stitch Line

FRONT



DESIGN INFORMATION

Artwork can use up to 7 color total
Color will be a closest match to PMS reference